

## STANDARD LED BOLLARD



## PRODUCT DESCRIPTION

The Standard LED Bollard is designed with a modern cylindrical shape with dome, flat, and peak tops available. This LED Bollard is constructed with a high-quality extrusion aluminum body and a clear polycarbonate lens. This Bollard is ideal for parks, lawns, plazas, and residential applications.

## FEATURE

- Dome, flat and peak tops for option
- High quality extrusion aluminum body
- Stainless steel silicone rubber sealing
- IP 66 rated for wet location
- Side shield for option

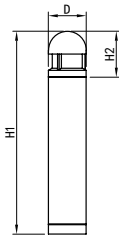
## ELECTRICAL SYSTEM

- Input Voltage: 120-277V
- 50/60Hz
- Minimum Ambient -40°F, maximum ambient 104°F
- Power Factor: > 0.9 @120Vac
- Total Harmonic Distortion: < 20%

## SPECIFICATION

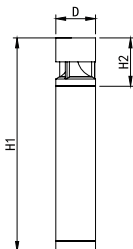
### Dome Top

D: 7.90"  
H1: 42.10"  
H2: 9.53"  
Max Weight: 18.3lbs



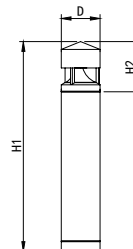
### Flat Top

D: 7.90"  
H1: 42.10"  
H2: 9.53"  
Max Weight: 18.3lbs



### Peak Top

D: 7.90"  
H1: 42.10"  
H2: 10.08"  
Max Weight: 18.3lbs



## PERFORMANCE

CRI

70+

CCT

3000K, 4000K, 5000K

Dimming

0-10V Dimming Standard

Projected Lifetime

L70 - 127,000 Hours

Working Temperature

-4-104°F (-40-40°C)

Certifications

- cULus Listed
- Suitable for wet location
- RoHS compliant

## Ordering Information

### Example: DB24401-V

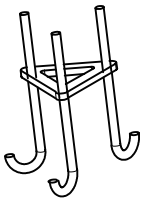
Top	Watts	CCT	Voltage	Controls	Distribution	Lens	Finish
<b>DB</b> = Dome Top Bollard <sup>1</sup>	<b>12</b> - 12W	<b>22</b> - Amber in 2200K <sup>2</sup>	<b>1</b> - 120-277V	<b>Blank</b> - None	<b>V</b> - Type V	<b>Blank</b> - PC clear lens	Standard <b>Blank</b> -Bronze
<b>FB</b> = Flat Top Bollard	<b>24</b> - 24W	<b>30</b> - 3000K <sup>3</sup>					Optional*
<b>PB</b> = Peak Top Bollard		<b>40</b> - 4000K					<b>BK</b> - Black
		<b>50</b> - 5000K					<b>WH</b> - White
							<b>GY</b> - Grey
							(See Notes)

#### Note:

- DLC is only available for 24W Dome Top.
- The 2200K is for Amber LED use. More information is in the following wavelength chart. It is special and may need long lead time, please contact Customer Service for details.
- DLC is not available for 2200K and 3000K.

\* Standard Finish is Dark Bronze. Allow 4-6 weeks for optional finish. Additional charge will apply.

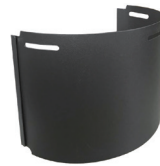
## ACCESSORIES (ORDER SEPARATELY)



**90245**

ABMK01

Anchor bolt (M10) mounting kits for standard bollard



**90541**

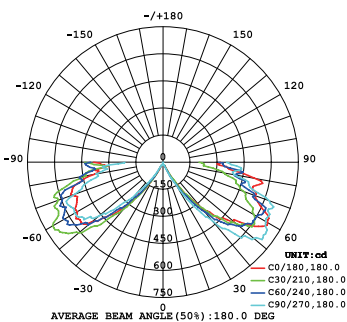
BOLLARD-SS-180°

180° SIDE SHIELD for standard bollard

## PHOTOMETRY

All published luminaire photometric testing performed to IESNA LM-79-08 standards by a NVLAP certified laboratory.

### Type V



# PERFORMANCE DATA

## LUMEN OUTPUT

Lumen values are measured by third party certified laboratories performed in accordance with IESNA LM-79-08 as well as Lighting Facts listed.

Watts	Lumen Output	AC Input 120V	CRI	CCT	Dist. Type	LPW
12W	1340lm	0.19A	>70	4000K	Type V	<b>112</b>
24W	2500lm	0.22A	>70	4000K	Type V	<b>104</b>

CCT	Lumen Multiplier
4000K	1
3000K	0.93
2200K	0.84

### Projected LED Lumen Maintenance

Data references the extrapolated performance projections for the LED bollard in a 77°F ambient, (tested per IESNA LM-80-08 and projected per IESNA TM-21-11).

Operating Hours	0	6,000	14,000	29,000	127,000
Lumen Maintenance Factor	0.1	0.98(L98)	0.96(L96)	0.92(L92)	<b>0.70(L70)</b>

### Lumen Ambient Temperature (LAT) Multipliers

Use these factors to determine relative lumen output for average ambient temperature from -40-104°F (-40-40°C).

Ambient		Multiplier
Celsius	Fahrenheit	
0	32	1.02
10	50	1.01
20	68	1.00
25	77	1.00
30	86	1.00
40	104	0.99

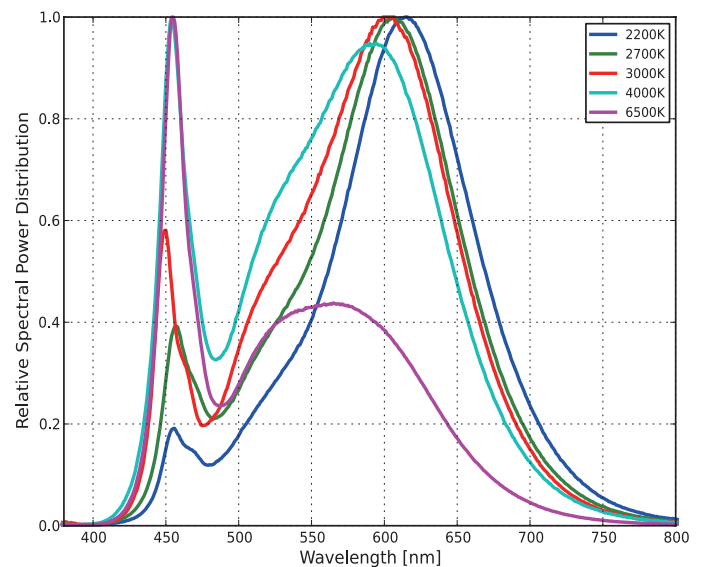
## BUG Rating

Performed to IESNA LM-79-08 standards by a NVLAP accredited laboratory.

Model	BUG Rating
DB12301-V with shield_IESNA2002	B1-U3-G1
DB12401-V with shield_IESNA2002	B1-U3-G1
DB12501-V with shield_IESNA2002	B1-U3-G1
DB24301-V with shield_IESNA2002	B1-U3-G2
DB24401-V with shield_IESNA2002	B1-U3-G2
DB24501-V with shield_IESNA2002	B2-U3-G2
DB24401-V	B2-U3-G2
FB24401-V	B2-U3-G2
PB24401-V	B2-U3-G2

## LED WAVELENGTH

The 2200K is for Amber LED use. It's wavelength is quite similar with the standard Amber LED.



## Warranty

Five year limited warranty.

Specifications subject to change without notice.