



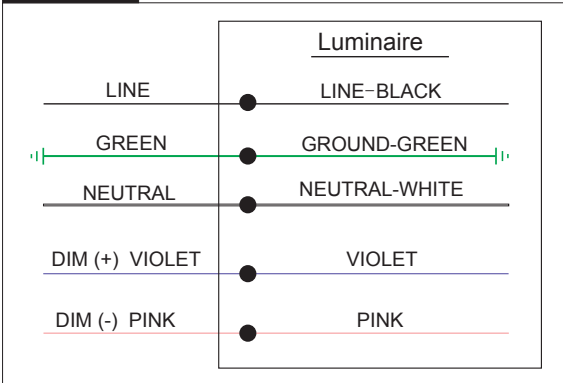
**RISK OF FIRE AND ELECTRICAL SHOCK. FIXTURE MUST BE INSTALLED BY A QUALIFIED ELECTRICIAN ONLY IN ACCORDANCE WITH NATIONAL, LOCAL BUILDING AND ELECTRICAL CODES. DISCONNECT POWER AT ELECTRICAL PANEL BEFORE SERVICING.**

## SURFACE MOUNT

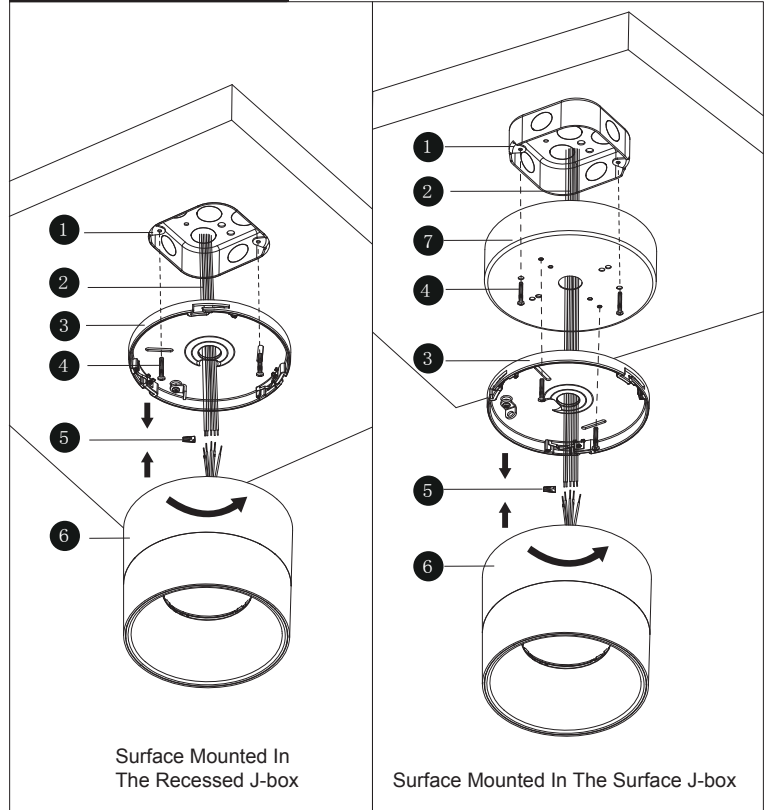
### IMPORTANT

1. Read all instructions.
2. Install in accordance with national and local electrical code regulations.
3. This product is intended to be installed and serviced by a qualified, licensed electrician.
4. Do not install in wet locations. For dry and damp use only.
5. Turn off electrical power before installing or servicing fixture in any way.
6. To reduce the risk of fire and overheating, make sure all connections are tight.
7. Under no circumstances can the lighting fixture be covered with heat insulation gasket or similar materials.

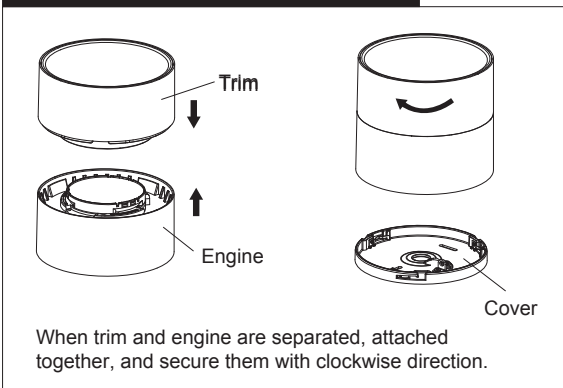
### WIRING



### INSTALLATION

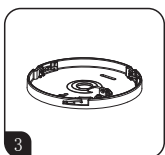


### STRUCTURE OF THE LAMP

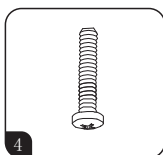


### ▶ PARTS

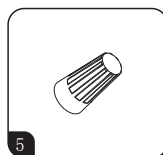
- 1 4" Octagon Junction Box (By Others)
- 2 Power Cord (By Others)
- 3 4" /6" /8" Cove
- 4 Screw KM4\*22
- 5 Wire Nut
- 6 4" /6" /8" lamp
- 7 6" Canopy Power Feed



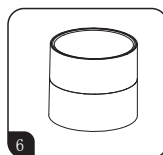
4" /6" /8" Cove



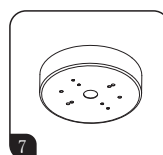
Screw KM4\*22



Wire Nut



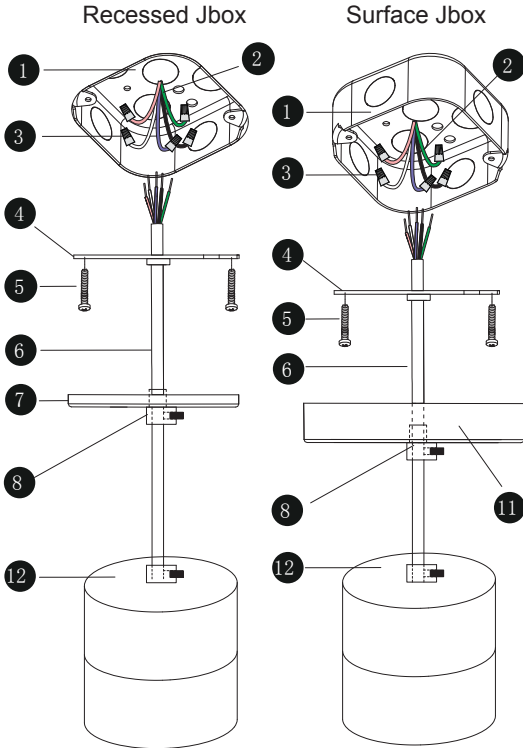
4" /6" /8" Lamp



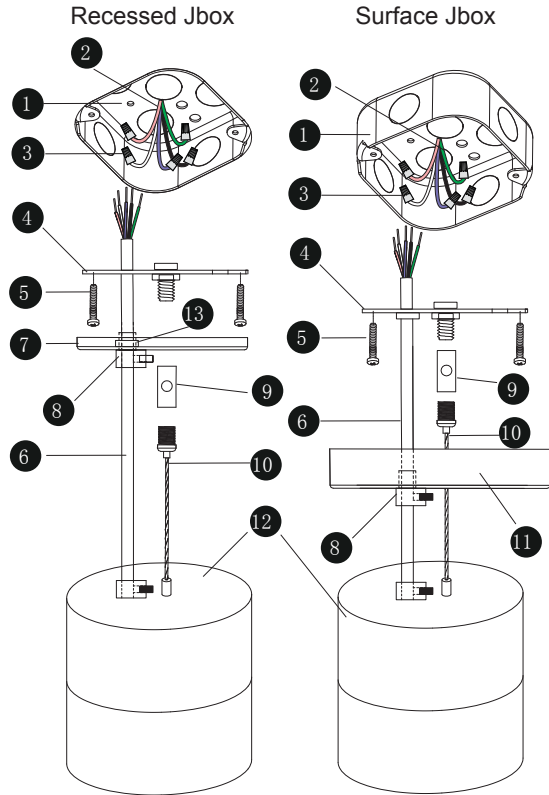
6" Canopy Power Feed

**AIRCRAFT CABLE PENDANT MOUNT**

►► 4"

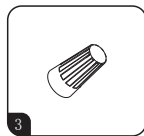


►► 6" and 8"

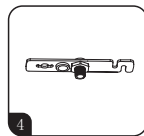


►► PARTS

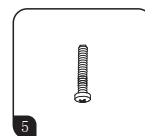
- ① 4" Octagon Junction Box (By Others)
- ② Power Cord (By Others)
- ③ Wire Nut
- ④ Junction Box Crossbar
- ⑤ Screw KM4\*22
- ⑥ Power Cord
- ⑦ 4" Canopy Power Feed
- ⑧ Cable Clip
- ⑨ Cable Holder
- ⑩ Aircraft Cable
- ⑪ 6" Canopy Power Feed
- ⑫ 4" /6" /8" Lamp
- ⑬ Screw nut



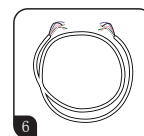
Wire Nut



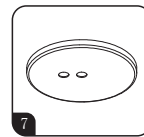
Junction Box Crossbar



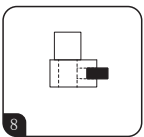
Screw PM4\*22



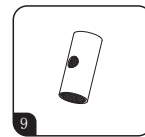
Power Cord



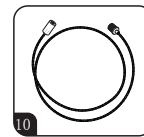
4" Canopy Power Feed



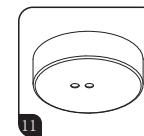
Cable Clip



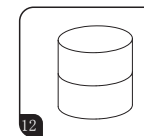
Cable Holder



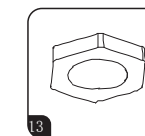
Aircraft Cable



6" Canopy Power Feed

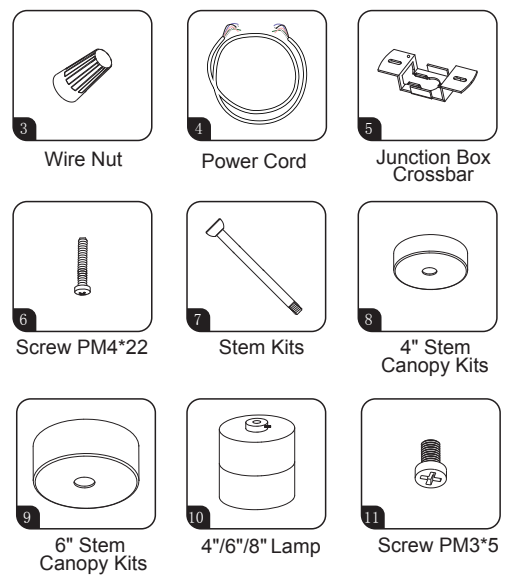
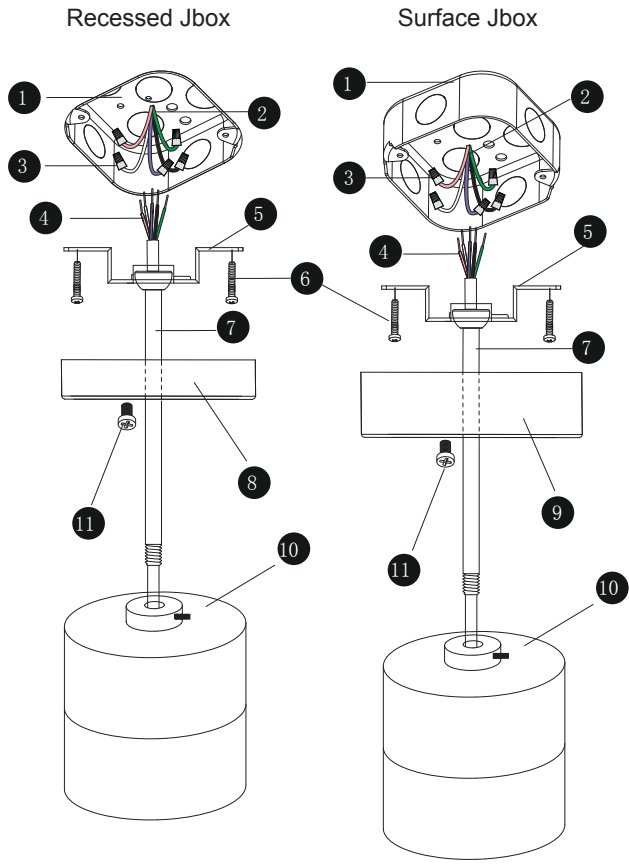


4" /6" /8" Lamp



screw nut

**RIGID STEM PENDANT MOUNT**



**PARTS**

- 1 4" Octagon Junction Box (By Others)
- 2 Power Cord (By Others)
- 3 Wire Nut
- 4 Power Cord
- 5 Junction Box Crossbar
- 6 Screw PM4\*22
- 7 Stem Kits
- 8 4" Stem Canopy Kits
- 9 6" Stem Canopy Kits
- 10 4"/6"/8" Lamp
- 11 Screw PM3\*5

Ref#: 20240618

**!** ATTENTION: Install in accordance with national and local building and electrical codes.