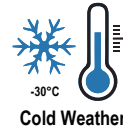




COBBLE EMERGENCY LED WALL LIGHT



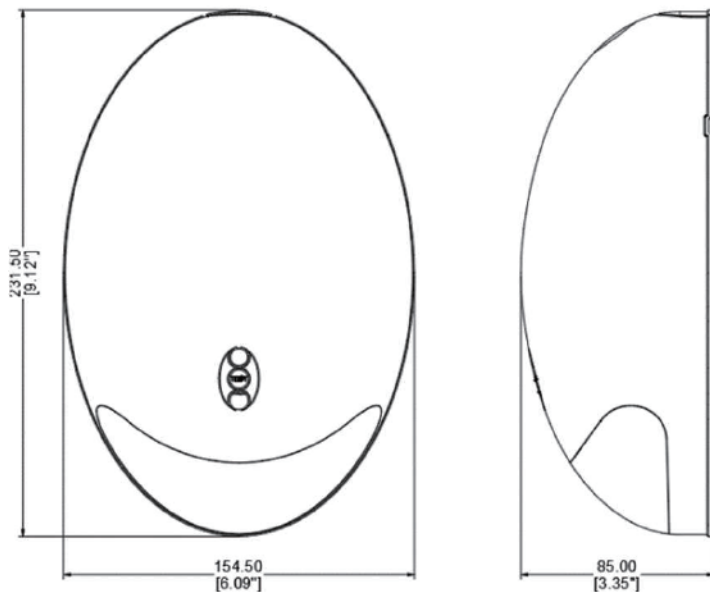
PRODUCT DESCRIPTION

The Cobble outdoor emergency LED wall pack has vandal resistant fixing design, can be applicable in harsh outdoor cold-weather conditions. Housing material Die casting with long lasting UV resistant powder painted. Provides a minimum of 90 minutes of illumination both indoors and outdoors upon loss of AC power. Photocell sensor included as a standard for use as dusk to dawn light.

FEATURES

- Vandal resistant fixing design
- Operation temperature -30°C~40°C
- 3000K,4000K,5000K selectable
- Full cutoff distributing light design
- Self Testing & Self diagnostic
- The AC and emergency light model comes standard.
- Photocell sensor included as a standard for use as dusk to dawn light
- Sealed decorative housing is suitable for wet locations
- Easy-mount back plate

DIMENTION



PERFORMANCE

CRI

80

CCT

3000K, 4000K, 5000K

Dimming

0-10V Dimming Standard

Projected Lifetime

L70 -100,000 Hours

Working Temperature

-22°F - 104°F (-30°C- 40°C)

Certifications

- cUL listed
- Suitable for wet locations
- IP65 rated
- IK10 rated
- RoHs compliant

Ordering Information

Example: CEMWP-SW1-PC-EBU-BZ

Name	CCT	Voltage	Control	Finish
CEMWP	SW - 3000/4000/5000K Selectable ¹	1-120-277V	PC-EBU - Photo Control and Emergency Battery Back-up ²	BZ - Bronze * Other finish color will ask for additional charge.

Notice:

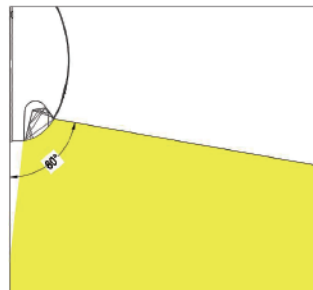
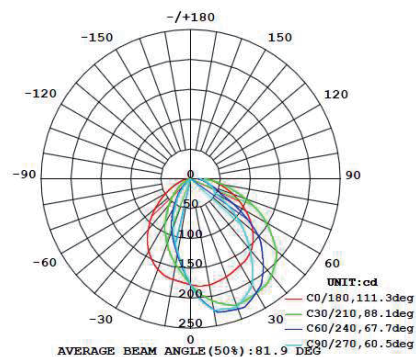
1. Factory default setting color temperature is 4000K, change the jumper cap to select different CCT.
 2. For photo sensor mode ,when ambient luminance < 10 Lux, fixture will turn on automatically. when ambient luminance >30 Lux, fixture will turn off.
- * For wall switch mode, make a wall switch between 1 and 2 .
 - * Remove the jumper cable change to emergency standby (Non-maintain) function.
 - * Bronze finish is standard. Other finish color can be done but will ask for additional charge. Consult customer service for additional information.

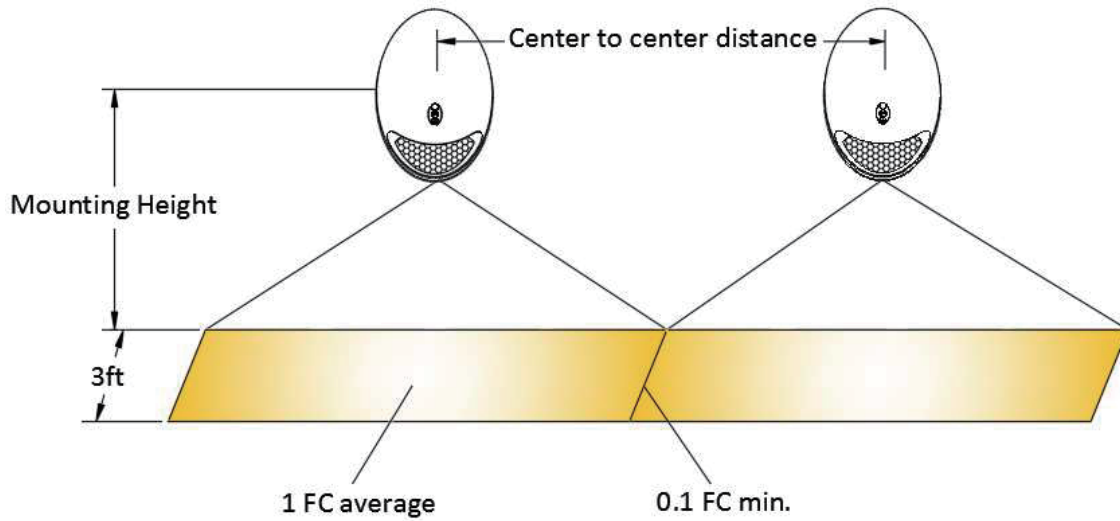
TECHNICAL SPECIFICATION

Normal Supply	120-277V 60Hz
Power consumption	Standby 11W, Max.15W at battery charge and heater work
Charge / discharge time	24 hours charge, 90 Minutes Min. discharge
Battery	6.4V 1500mAh 18650type LiFePO4 battery
Emergency test facility	Self-Test and Self-Diagnostic
Operation	General lighting with photo sensor and emergency battery backup)
Mounting	Wall mount with back power lead or conduit power lead
LED source	CRI 80+, CCT 3000K/4000/5000K 5SDCM
Normal flux	1250lm@4000k AC mode, 400lm@4000k emergency mode
Housing material	Die casting with long lasting UV resistant powder painted

MULTIPLE UNIT COVERAGE

All published luminaire photo metric testing performed to IESNA LM-79-08 standards by a NVLAP certified laboratory.

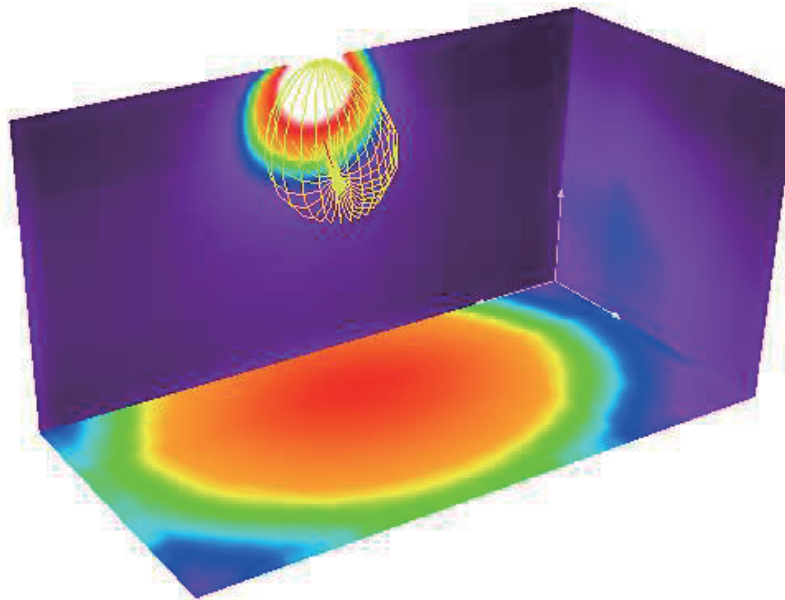


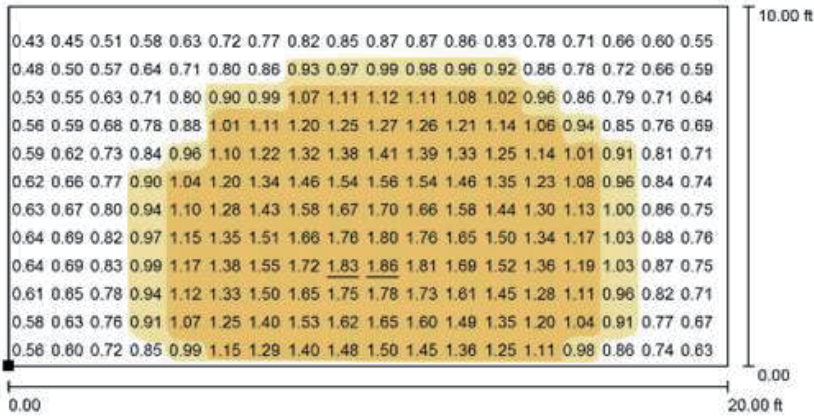


Requirements: 1.0 foot-candle average and 0.1 foot-candle minimum with a 40:1 maximum/minimum ratio.
The corridor used is 80 feet long, 9 feet ceiling with a 6 feet wide walkway and 6&3 feet path of egress.
The reflectance are 80% ceiling, 50% walls and 20% floors. The fixture mounting height is 7.5 feet.

Lumen Output	Spacing Distance @ Mounting Height -7.5 Ft	Spacing Distance @ Mounting Height -10 Ft
400 lm	45 feet	40 feet

SINGLE UNIT FOR DOOR FORWARD PERFORMANCE





Values in Footcandles, Scale 1 : 44

Not all calculated values could be displayed.

Position of surface in room:
Marked point: (0.000 ft, 0.000 ft, 0.000 ft)



Grid: 128 x 64 Points

E_{av} [fc]
1.02

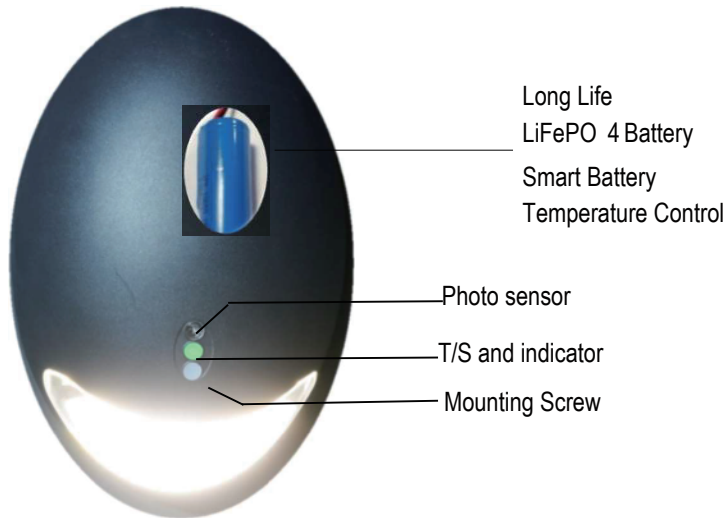
E_{min} [fc]
0.39

E_{max} [fc]
1.87

u_0
0.386

E_{min} / E_{max}
0.211

DESIGN ADVANTAGES



WARRANTY

Three year limited warranty.

Note: Specifications subject to change without notice.