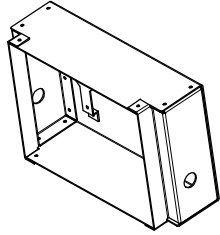


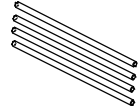
INSTALLATION

POURED CONCRETE INSTALLATION

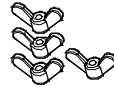
ACCESSORY PACK (shipped together)



Embedded Mounting Box X 1



Stud X 4



Wing Nut X 4



Washer X 4

INSTALLATIONS

1. Leave space for Embedded Mounting Box according to the dimension. See Figure 1.
3. Connect Conduit to 1/2 NPT at the side of the Embedded Mounting Box. Pull wires into box for electrical connections to be made later.
2. Fasten Embedded Mounting Box to the Concrete Form using (4) Wing Nuts & Washers and (4) Studs provided. See Figure 2.
4. Pour concrete. Note: Do NOT pump or drop concrete directly on top of the Embedded Mounting Box.
5. Remove the (4) Wing Nuts & Washers and (4) Studs before removing Concrete Form.
6. Install splatter guard (customer supplied) to protect during construction.
7. Place a small layer of silicone between edge of Embedded Mounting Box and wall to provide a watertight seal.
8. Before continuing fixture installation, remove splatter guard and debris from sealing surface.

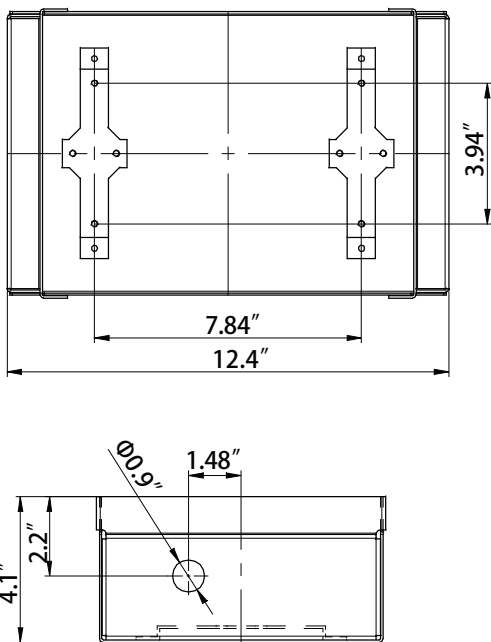


Figure 1

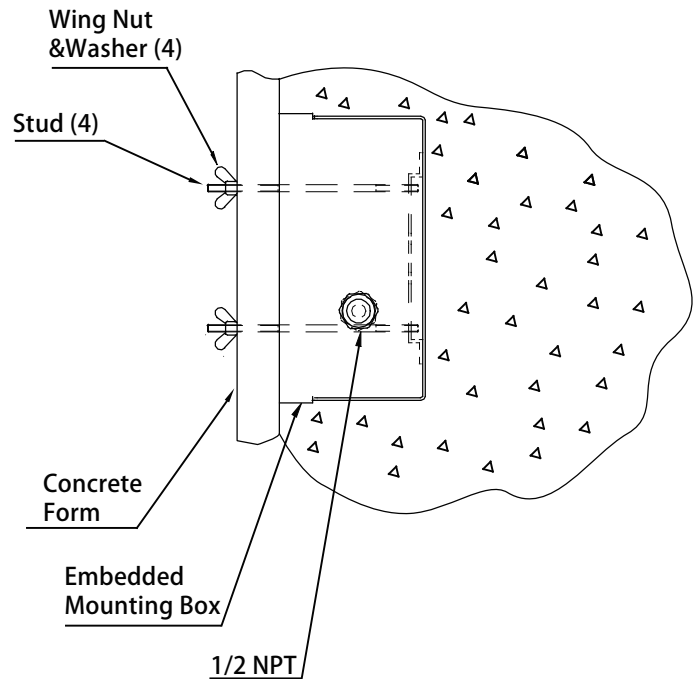


Figure 2