

DOT SERIES MAGNETIC TRACK LIGHT

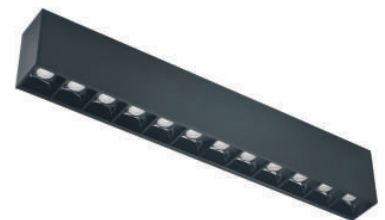
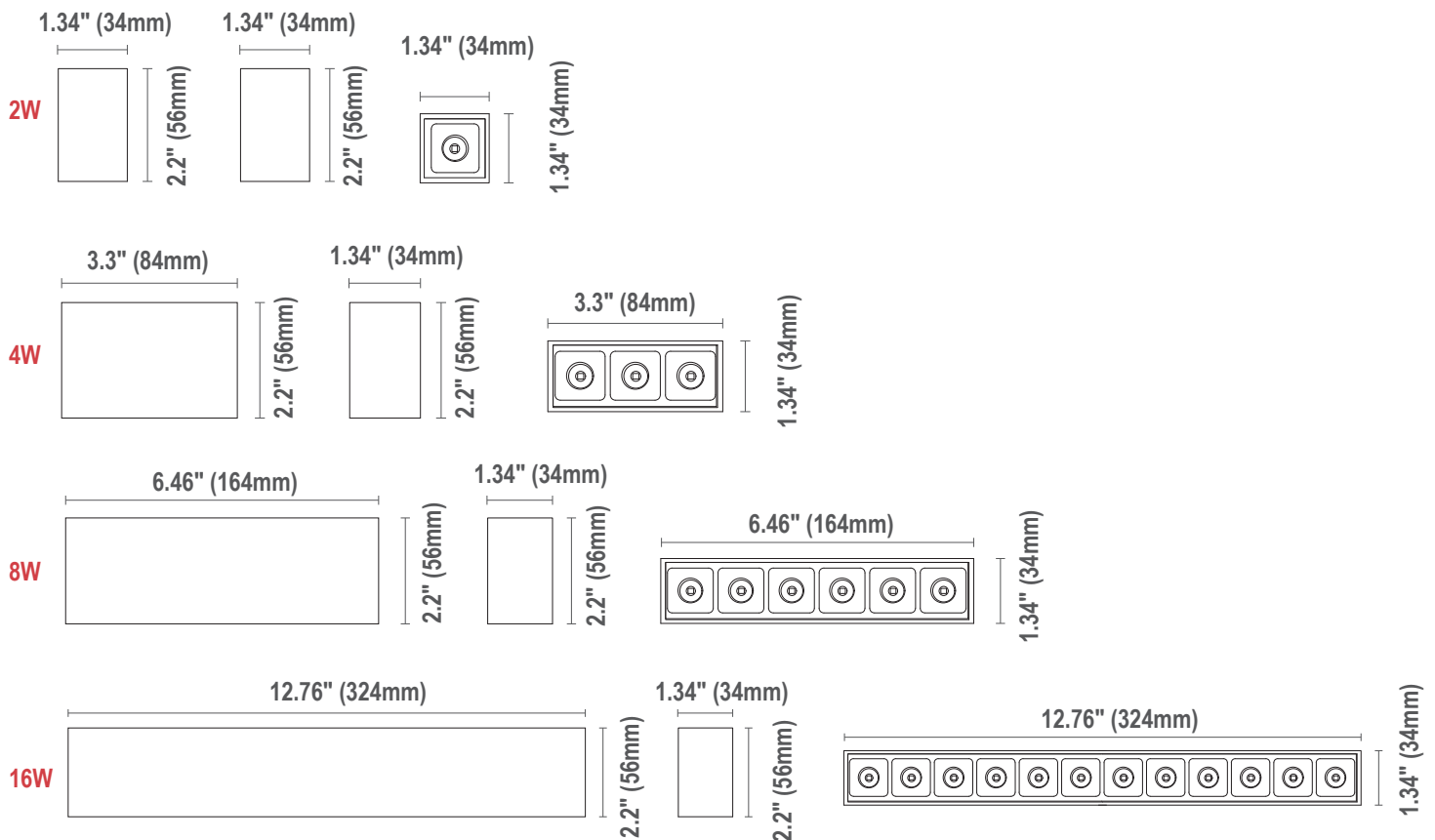
GENERAL SPECIFICATION

The dot series is ideal for spot lighting. This design features a deep antiglare spot lens that allows for multiple beam angles, and is available in different wattages and lengths with elegant clean body



Beam angle: 12/34/48°
CCT: 2700K/3000K/4000K
CRI: RA90
DIM: Triac, 0/1-10V,
Installation: Magnetic
Environment: Indoor

DIMENSION



Ordering Information

Example: DOT04-3090-24V-34-MTM-BK

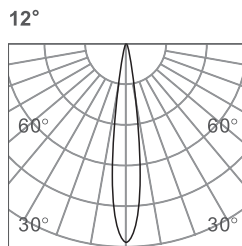
Series	Watts/Length	CCT&CRI	Voltage	Beam Angle	Installation	Finish
DOT	02 - 2W / 1.34"	2790 - 2700K 90Ra	- 24V-24Vdc ¹	12 - 12 degree	MTM - Magnetic Track Mount	- BK -Black ²
	04 - 4W / 3.3"	3090 - 3000K 90Ra		34 - 34 degree		Optional
	08 - 8W / 6.46"	4090 - 4000K 90Ra		48 - 48 degree		WH -White ²
	16 - 16W / 12.76"					

Notice:

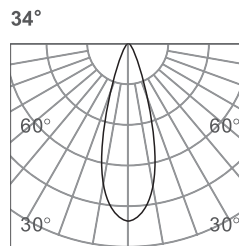
1. The fixture is used for 24V magnetic track system.
2. Standard Finish is black. Custom colors might be available for an additional fee. Please check with Customer Service for more information.

PHOTOMETRY

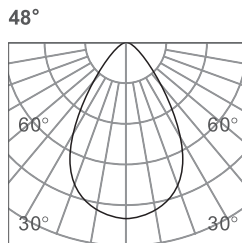
All published luminaire photometric testing performed to IESNA LM-79-08 standards by a NVLAP certified laboratory.



h(m)	E(lx)	Φ(m)
1	3693	Φ0.23
2	923	Φ0.47
3	410	Φ0.71
4	230	Φ0.94
5	147	Φ1.18



h(m)	E(lx)	Φ(m)
1	1238	Φ0.61
2	309	Φ1.22
3	137	Φ1.83
4	77	Φ2.44
5	49	Φ3.05



h(m)	E(lx)	Φ(m)
1	778	Φ0.91
2	194	Φ1.82
3	86	Φ2.73
4	48	Φ3.64
5	31	Φ4.55

PERFORMANCE DATA

Lumen values are estimated with LED data sheet.

Watts	Lumen Output	CRI	Beam Angle	CCT	LPW
2	120	90	34°	3000K	60
4	380	90	34°	3000K	95
8	730	90	12°/34°/48°	3000K	92
16	1430	90	12°/34°/48°	3000K	89

Warranty

Five year limited warranty.

* Specifications subject to change without notice.