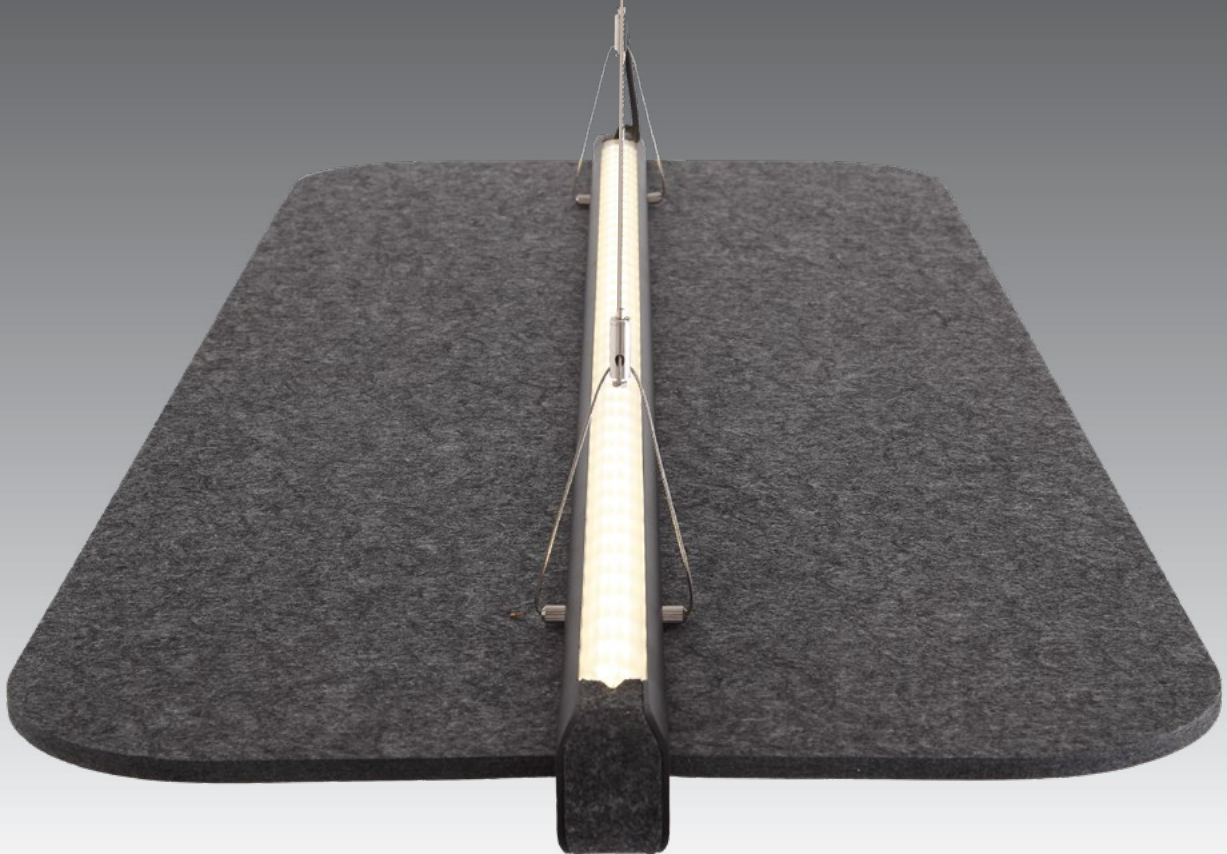


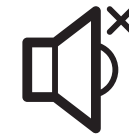
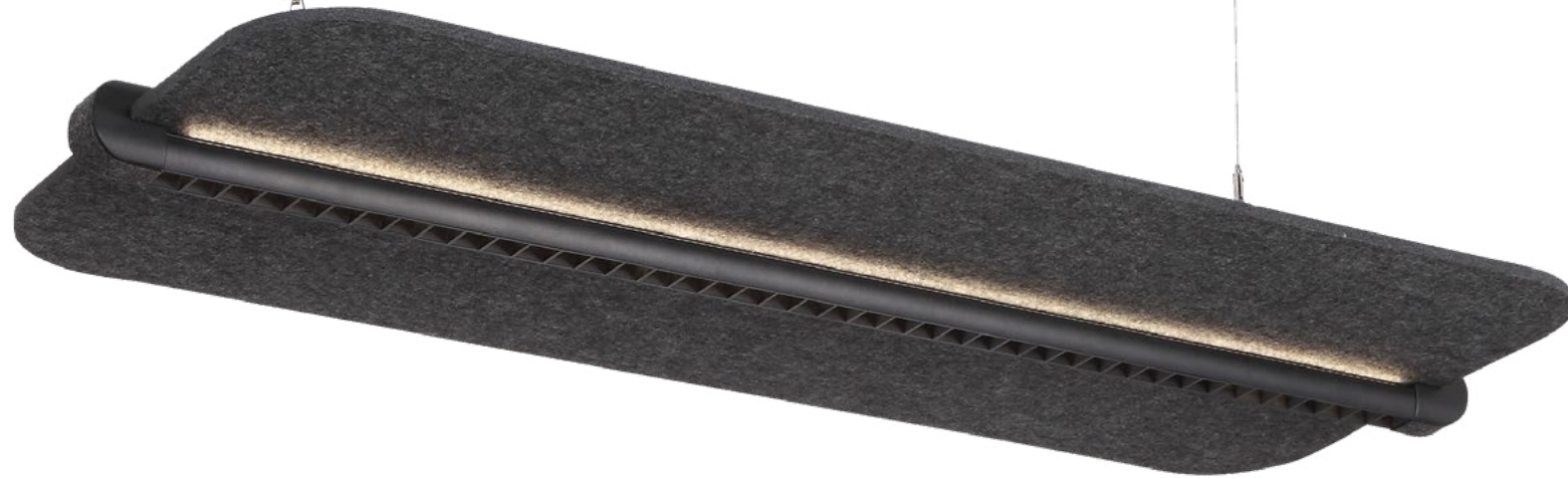
# WINGSUIT

The Acoustic Light

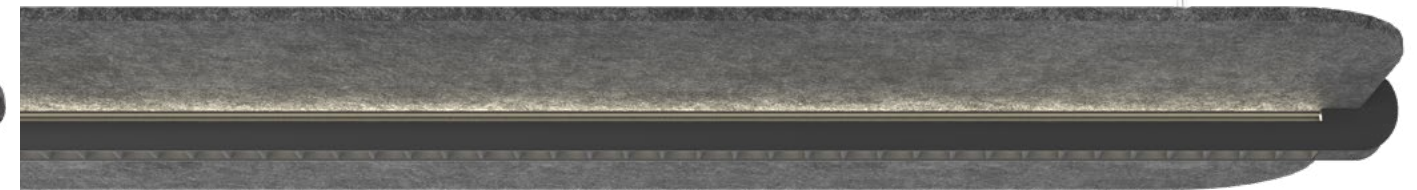
- Sound absorbing polyester fiber
- Deep anti-glare cup optics
- Direct and indirect distribution
- Soft side distribution







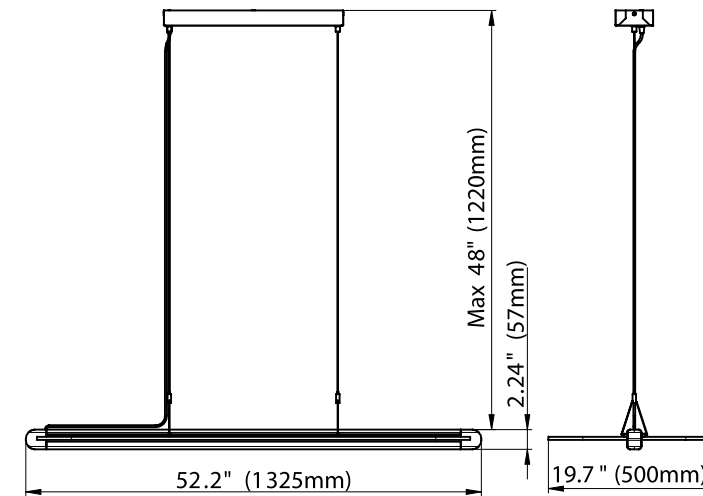
- Sound absorbing polyester fiber



**The Wingsuit Acoustic Light** is a high-performing, sound-absorbing LED pendant luminaire with a wing appearance. The acoustic light is made up of a sound absorbing polyester fiber materials. It is a new materials that integrate sound absorbing, heat insulation and decorative effects. Deep anti-glare cup design is for better glare control. Direct and indirect distributions.

## Specification

Net Weight: 7.72 lbs / 3.5 kg



Input Watts (Nominal):	65W
Input Voltage:	120V-347V
Distribution	Indirect & Direct
Lumen Output	2300+2300
CCT	4000K
CRI	80
Working Temperature:	-4-104°F (-20-40°C)



- Deep anti-glare cup optics





IMPOSSIBLE  
IS  
NOTHING



- Direct and indirect distribution



- Soft side distribution