



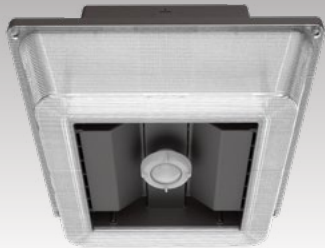
www.AboveAllLighting.com

CATALOGUE 2022



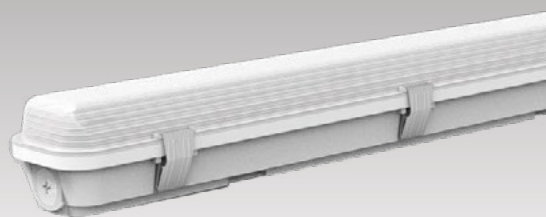
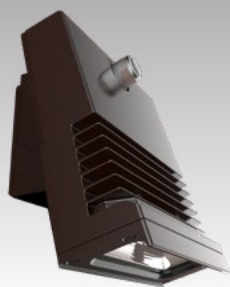
HIGHLIGHTS

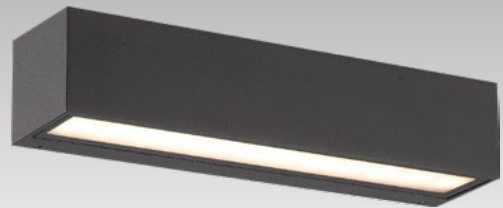
OUTDOOR



HIGHLIGHTS

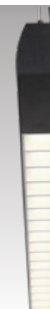
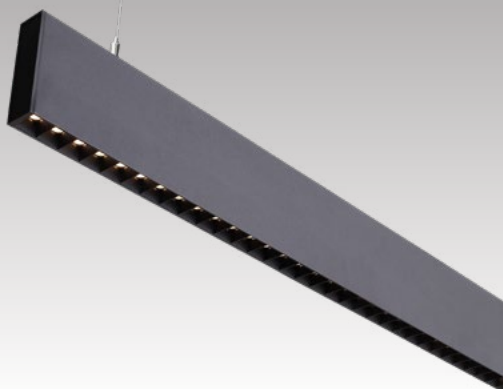
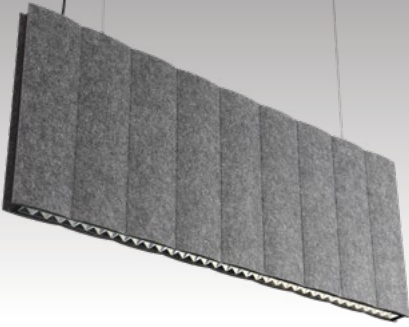
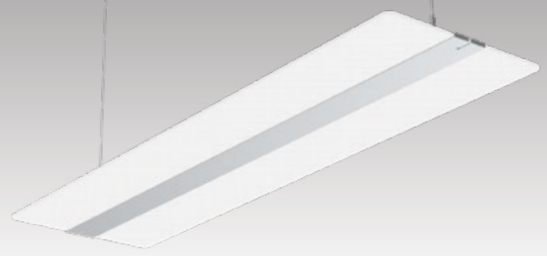
OUTDOOR

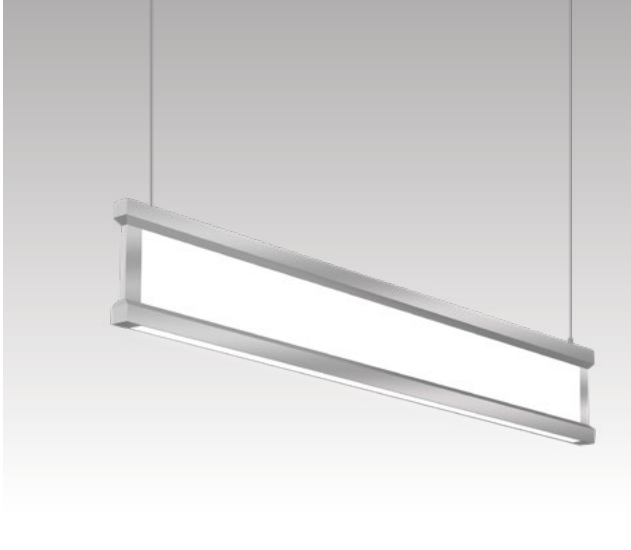




HIGHLIGHTS

INDOOR





Post Top



Moon Series Post Top



Pavilion Post Top



Cone LED Post Top



Eunike LED Post Top

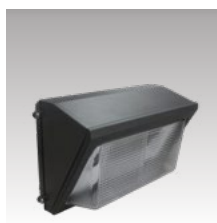


Versatile Post Top

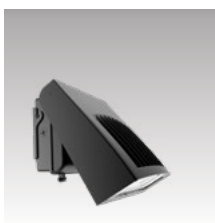
Wall Mount



Briwall LED Wall Pack



Selectable Classic LED Wall Pack



Selectable Slim Wall Pack



Eunike LED Post Top



SMT Wall Mount



V-Line Wall Pack



Leopard Series Mini Wall Pack



Traditional Standard Wall Pack



Dark Sky Wall Pack

LED Area Light



SMT Area Light



MT Area Light



Versatile Area Light



Sky Light



Array LED Area Light

LED Garage Light



Moon Series Garage Fixture



LS Garage Light



Parking Garage light



Moon Series
Garage Fixture



LS Garage Light



Canopy



Moon Series
Canopy Fixture



PAD Canopy Light

**LED
Canopy
Light**



Versatile Series
LED Bollard



Louvers Round
LED Bollard



Cone LED Post Top



Selectable Standard
LED Bollard



Standard Bollards

LED Bollards



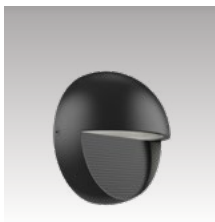
Pot Series Vapor
Proof Fixtures

**LED Pot
Series
Vapor
Proof
Fixtures**



Vapor Tight

**LED Vapor
Tight**



Poulynoe LED
Wall Light



Cylinder LED Wall
Light



Firefly Lantern LED
Wall Light



Thetis LED Wall
Light



Eudora LED Wall
Light

Wall Light



Poulynoe Large LED Wall Light



Spot LED Wall Light



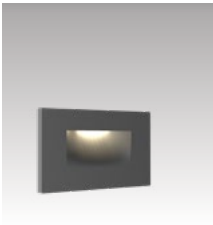
Ploto LED Wall Light



Starrysky LED Wall Light



Erato LED Wall Light



Horizontal Mini LED Step Light



Vertical Mini LED Step Light



Trumpet LED Wall Light



Thoe LED Wall Light



Villa LED Wall Light



Security Light



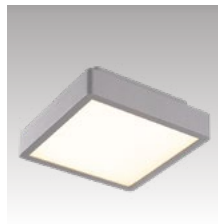
TR Security Light



Solid Step And Wall Light

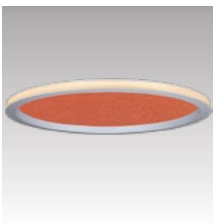


OFM Ceiling Light (Round)



OFM Ceiling Light (Square)

Surface



(VRO) Vicky Ring Outward Light Acoustic



(VRO) Vicky Ring Outward Light



(VRO) Vicky Ring Outward Light



(VRI) Vicky Ring Inward Light



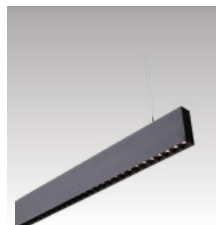
Focus Acoustic Fixture

Ring

Pendant



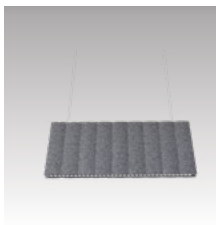
Canoe Pendant Light



Selectable Classic LED Wall Pack



Britube Linear Light



Corrugated Acoustic Light



Wingsuit Acoustic Light



Briwall LED Wall Pack



ARC Linear Pendant



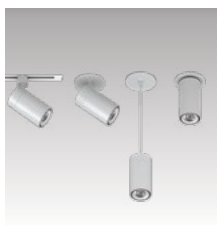
Soar Pendant Light



Vagary Pendant Light



SLAB Pendant Light



Magic Cylinder Light (Pendant)

Wall Light



Glauce Wall Linear (Perforation)



Glauce Wall Linear (Louver)

LED Strip



Selectable ECO Vision Strip Light



ECO Vision Strip Light



Vision Strip Light



GEN3 CCT/
Wattage Selectable
Slim strip light



GEN2 Slim Strip Light



Selectable ECO
Vision Strip Light



Integrate T-grid
Linear Light



MAGIC LED Linear

Linear



Linear Strip Retrofit
Kit

LED Strip Retrofit Kits



Heavenly Linear
High Bay



Linear High Bay



GEN.2 LED Linear
High Bay



GEN.2 UFO High
Bay



UFO High Bay

LED Highbay/ Lowbay



High Power UFO
High Bay

Door Frame Retrofit Kits 2x4



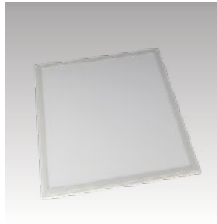
Door Frame Retrofit Kits 2x2



Door Frame Retrofit Kits 2x4



Selectable Flat Panel



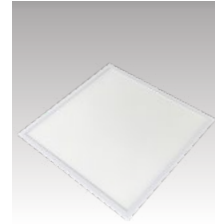
Flat Panel



Back-lit Flat Panel



Selectable Back-Lit Flat Panel



SKY Flat Panel

LED Flat Panel



Selectable LED Troffer



Center Basket Troffer



RT Troffer

LED Troffer



OPAL LED Wraparound Light

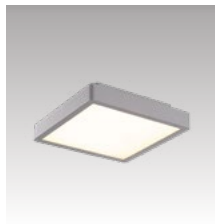
LED Wrap



Focus Round Light-(Surface)



Dome LED Ceiling Fixture Selectable



OFM Ceiling Light (Square)



OFM Ceiling Light (Round)



SleekCeiling LED Luminaire

Surface

Track



Magic Cylinder Light (Track)



Magic Cylinder Light (H-Type)



Magic Cylinder Light (J-Type)



Magic Cylinder Light (L-Type)

LED Tube



Type C T8 Quick-kit



Compatible T5 Tube (glass)



T8 Glass Compatible Tube



T8 Glass Bypass Tube

LED Downlight



Commercial Downlight Retrofit Kit 6 inch & 8 inch



Commercial Downlight Retrofit Kit 4 inch



Commercial Downlight Retrofit Kit 5 inch



Commercial Downlight Retrofit Kit 6 inch

OUTDOOR

Moon Series Post Top





Feature

- Easy and convenient for installation
- Light weight design and low EPA minimize pole load
- Die-cast aluminum housing and excellent thermal management
- IES distribution Types II, III & V for various applications
- Tempered glass lens doesn't fade and discolor
- Multi-level motion sensor, photocontrol and 3/5/7-pin NEMA receptacle options.



Multi-level Motion Sensor

Watts	Lumen @5000K	LPW
35W	4039	115
50W	5319	111
75W	8057.4	111.8
100W	11595	116.7
135W	16500	124



120-277V Photocontrol

Top:
Die-casting aluminum.

LED Driver:
Philips waterproof driver, integral 0-10V dimming.

Gasket:
Extruded silicone gasket for complete weatherproof sealing.

Heat Sink:
Air-flow fins for superior heat dissipation.

Reflector:
Buyer aluminum plated polycarbonate.

Lens:
Clear tempered glass lens.

Support Arms:
Extruded aluminum.

Post Top Tenon Fitter:
Die-casting aluminum tenon fitter designed to slip over a standard 2 3/8" and 3" tenon



480V Photocontrol



Wall Mount Bracket

OUTDOOR

Pavilion Post Top

- Up to 120LPW
- IES distribution Types II, III, IV & V for various applications
- Diffused glass lens panels for option
- Photocontrol & 3/5/7 PIN NEMA receptacle optional
- Integral 10KA surge suppression protection standards.



OUTDOOR

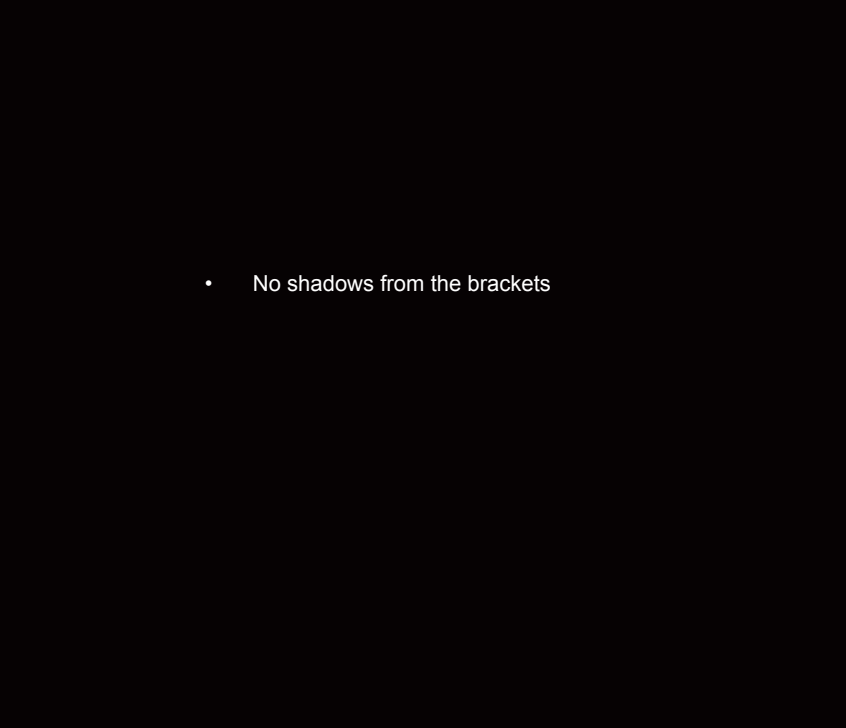
Cone LED Post Top

- Classic acorn-shaped post top
- Efficiency up to 140LPW
- No shadows from the brackets
- 10KA surge suppression protection
- IP65 rating





- Efficiency up to **140LPW**



- No shadows from the brackets

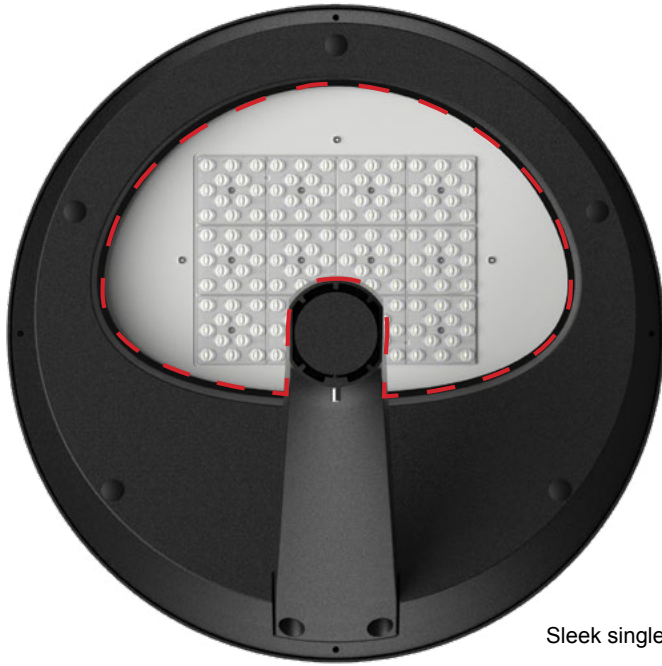




Eunike LED Post Top

- Sleek single arm design
- Photocontrol and microwave motion sensor optional.
- Tempered glass lens doesn't fade and discolor.
- IES distribution Types III, IV and V for various applications.

Tempered glass lens doesn't fade and discolor.



Sleek single arm design

Photocontrol and microwave motion sensor optional.



OUTDOOR

Versatile Post Top

(None & Acorn Shade)

- None or acorn shade.
- Photocontrol and microwave motion sensor optional
- Tempered glass lens doesn't fade and discolor
- IES distribution Types I, II & VN for various applications

(Bell & Petunia Shade)

- Bell and petunia shades available
- Photocontrol and microwave motion sensor optional
- Tempered glass lens doesn't fade and discolor
- IES distribution Types I, II & VN for various applications



VPTD

VPTD

VPTA

VPT



Versatile Area Light

- Versatile arm for horizontal and vertical pole mount
- Maximum 15° up and down adjustable
- Photocontrol and microwave motion sensor optional
- Tempered glass lens doesn't fade and discolor
- IES distribution Types I, II & VN for various application





◆ TECHNOLOGIES CENTRE
CENTRE for BUSINESS & ACC

OUTDOOR

Briwall LED Wall Pack

- Cutoff distribution design
- Lumen ranges from 1800lm to 8000lm
- Emergency back up, photocontrol and sensor available



OUTDOOR

Selectable Classic LED Wall Pack

- High efficiency up to 153LPW
- Wattage selectable
- 3000K, 4000K and 5000K selectable
- Lumen output range from 4000lm to 14,000lm
- Wide voltage 120-347V
- Tempered glass lens



OUTDOOR

Selectable Slim Wall Pack

- Architectural low profile design
- 0-90 degree angle adjustable
- 3000K, 4000K and 5000K selectable
- Wattage selectable
- Die-cast aluminum housing
- Tempered glass lens
- Sensor comes as standard



OUTDOOR

AKT LED Wall Pack

- Cutoff distribution design
- Lumen ranges from 1500lm to 13800lm
- Emergency back up, photocontrol and sensor available as option



OUTDOOR

Security Light

- Intergrated photocell
- Uniform color consistency



OUTDOOR

TR Security Light

- Slim Modern design
- Die cast aluminum housing
- Super thin prismatic lens design to minimize the glare
- Reliable 120-277V driver to ensure long life span
- Integrated button photocell
- Uniform color consistency

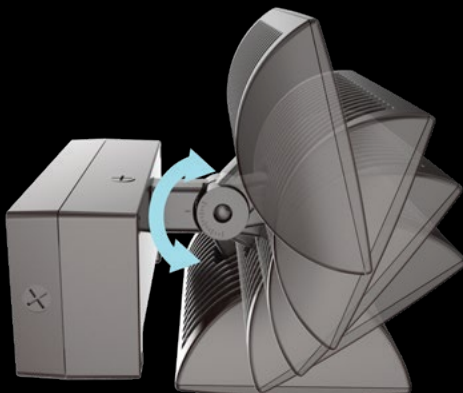


OUTDOOR

V-Line Wall Pack



- Adjustable head up & down light
- Main body separates from the driver
- Tempered glass lens doesn't fade and discolor



OUTDOOR

Leopard Series Mini Wall Pack & Flood Light

- Up to 146 LPW
- Tempered glass lens
- Angle adjustable by the junction box



OUTDOOR

Traditional Standard
Wall Pack





SMT Area Light

- Low profile design, minimizing wind load.
- Heavy duty construction with die casting aluminum housing.
- Polycarbonate with tempered glass lens doesn't fade and discolor.
- Versatile mounting options for square pole, round pole and wall mounting.
- Option of controls for maximum energy savings.
- Full distributions to cover various applications.
- Integral 10kV surge suppression protection.



Slipfitter Mount



Trunnion Mount



Wall Mount



Arm Mount





MT Area Light

- High efficacy, up to 145LPW
- Special reflector design
- Tempered glass lens
- Quick and easy installation



Slipfitter Mount



Arm Mount



Trunnion Mount



OUTDOOR

Sky Light

- IES distribution Types II, III & V
- Slip Fitter, trunnion, arm mount
- Photocell, sensor, 7pin receptacle
- 10kA surge protection included



OUTDOOR

Array LED Area Light

- High efficiency up to 155LPW
- IES distribution Types II, III, IV& V
- Various mounting options
- Photocell, sensor pin receptacle
- 10kA surge protection included





CLOSED

CLOSED

JLG
1932E2

Sold and Serviced
By
United Rentals
1-800-UR-RENTS

OUTDOOR

Moon Series Low Bay/ Garage/Canopy

- Tempered Clear and frosted glass lens
- Various mounting options
- Various sensors available
- Performance up to 136LPW
- House side shield and wire guard available



Hook Mount



Pendant Mount



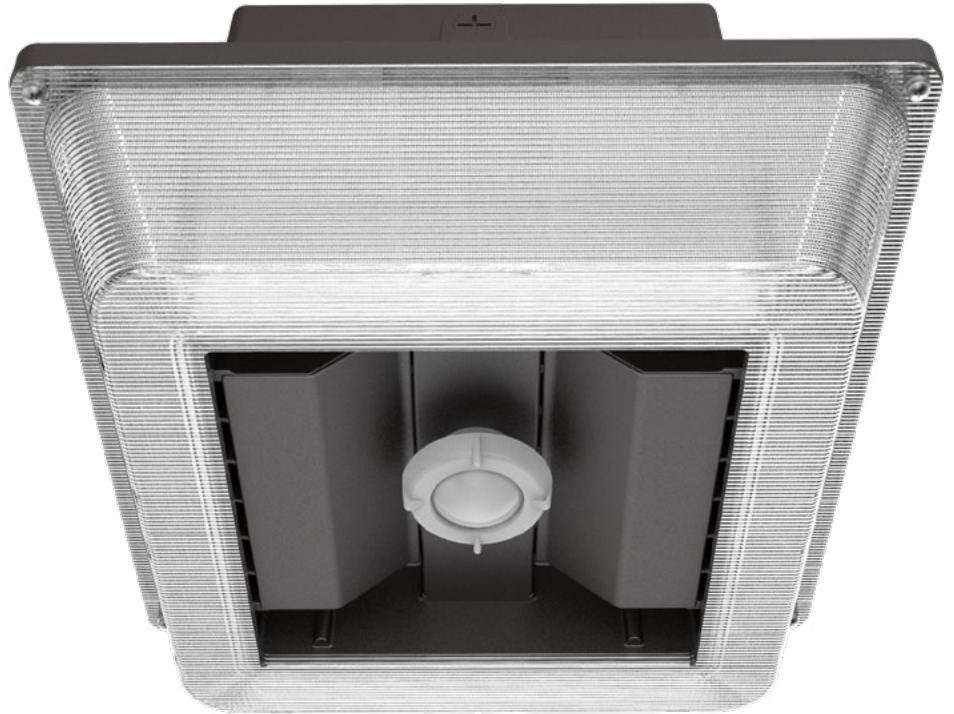
Surface Mount





LS Garage Light

- 11% uplight
- Superior Low-glare Illumination
- Performance up to 136LPW
- Sensor and EBU available
- With junction box, Easy for surface or pendant mount



OUTDOOR

Parking Garage light

- Superior low-glare illumination
- Top 5 LED chip & led driver
- 0-170° beam spread
- Photocell available



OUTDOOR

Selectable Canopy Light

- High efficiency up to 163LPW
- Die-cast aluminum housing
- 3000K, 4000K and 5000K selectable
- Wattage selectable
- Wide voltage 120-347V available
- Lumen output range from 4000lm to 13,200lm



OUTDOOR

J-BOX Canopy

- Microwave Dimming Sensor available
- With junction box, easy to install
- Light is soft and uniform, safe to eyes
- DLC Premium Listed



OUTDOOR

Canopy



OUTDOOR

PAD Canopy Light



- Slim low profile design
- Performance up to 150LPW
- Tempered glass lens
- Separate driver and special cooling design



OUTDOOR

Versatile Series LED
Bollard



- Simple and sleek design
- symmetric and asymmetric distributions
- House side shield available
- 20" and 35" high optional
- IP 65 rated for wet location



OUTDOOR

Louvers Round LED Bollard



- Louver and a rounded, cylindrical design
- High quality extrusion aluminum body
- Dome and flat top for option
- 20", 32" and 42" high optional
- IP 65 rated for wet location



OUTDOOR

Cone LED Post Top



- Square-shaped and architectural appeal
- High quality extrusion aluminum body
- Stainless steel, silicone rubber sealing
- IP 66 rated for wet location





OUTDOOR

Selectable Standard LED Bollard

3000K 4000K 5000K

CCT SELECTABLE

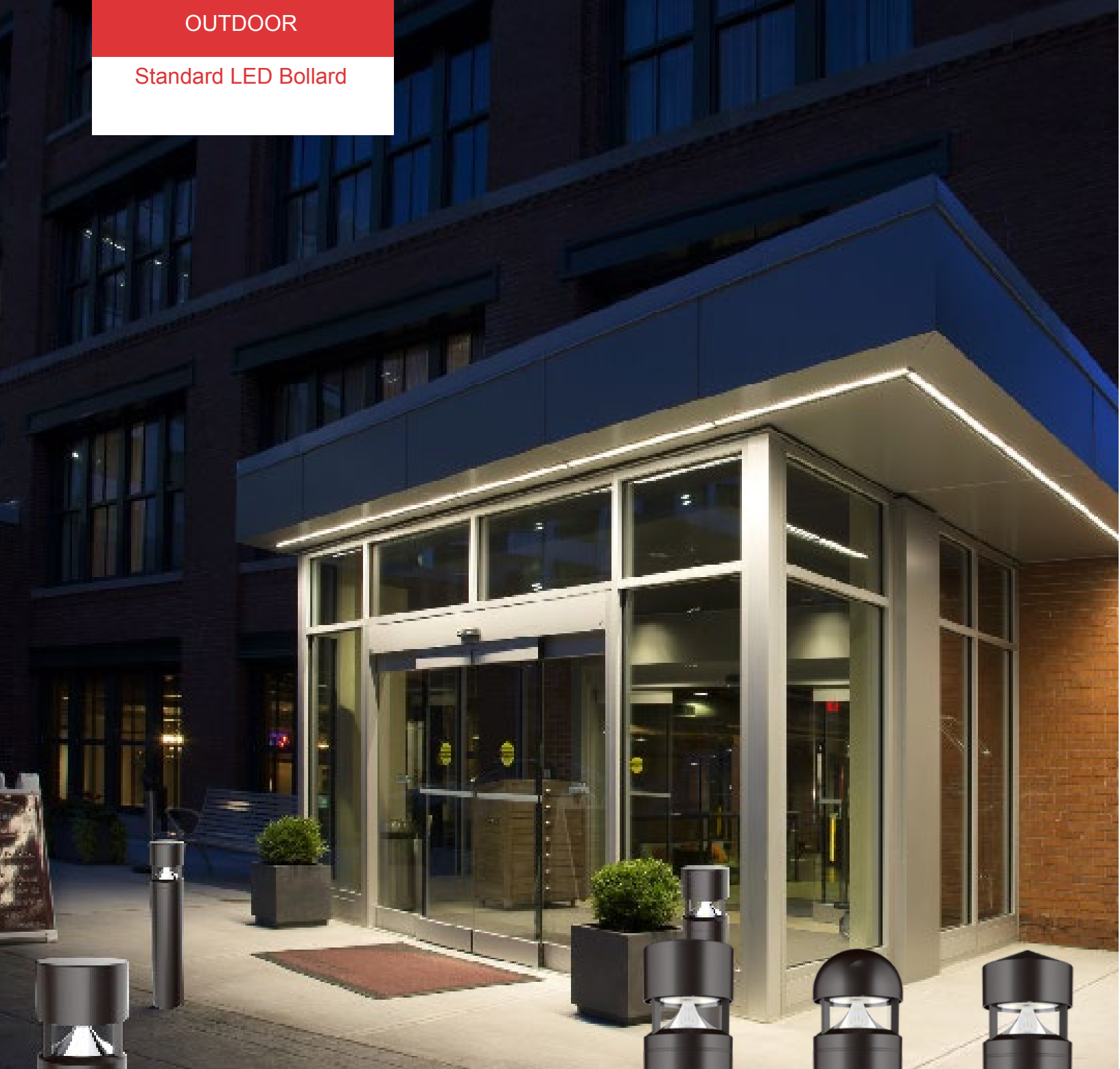
WATTAGE SELECTABLE

- Dome , flat and peak tops for option
- Wattage and CCT selectable
- 20", 32" and 42" high optional
- High quality extrusion aluminum body
- Stainless steel silicone rubber sealing
- IP 66 rated for wet location
- Side shield for option



OUTDOOR

Standard LED Bollard



- Dome , flat and peak tops for option
- High quality extrusion aluminum body
- Stainless steel silicone rubber sealing
- IP 66 rated for wet location
- Side shield for option



OUTDOOR

Pot Series Vapor Proof
Fixtures



- Die-cast aluminum and tempered glass globe
- Ceiling, wall and pendant mount
- Glass lens and wire guard

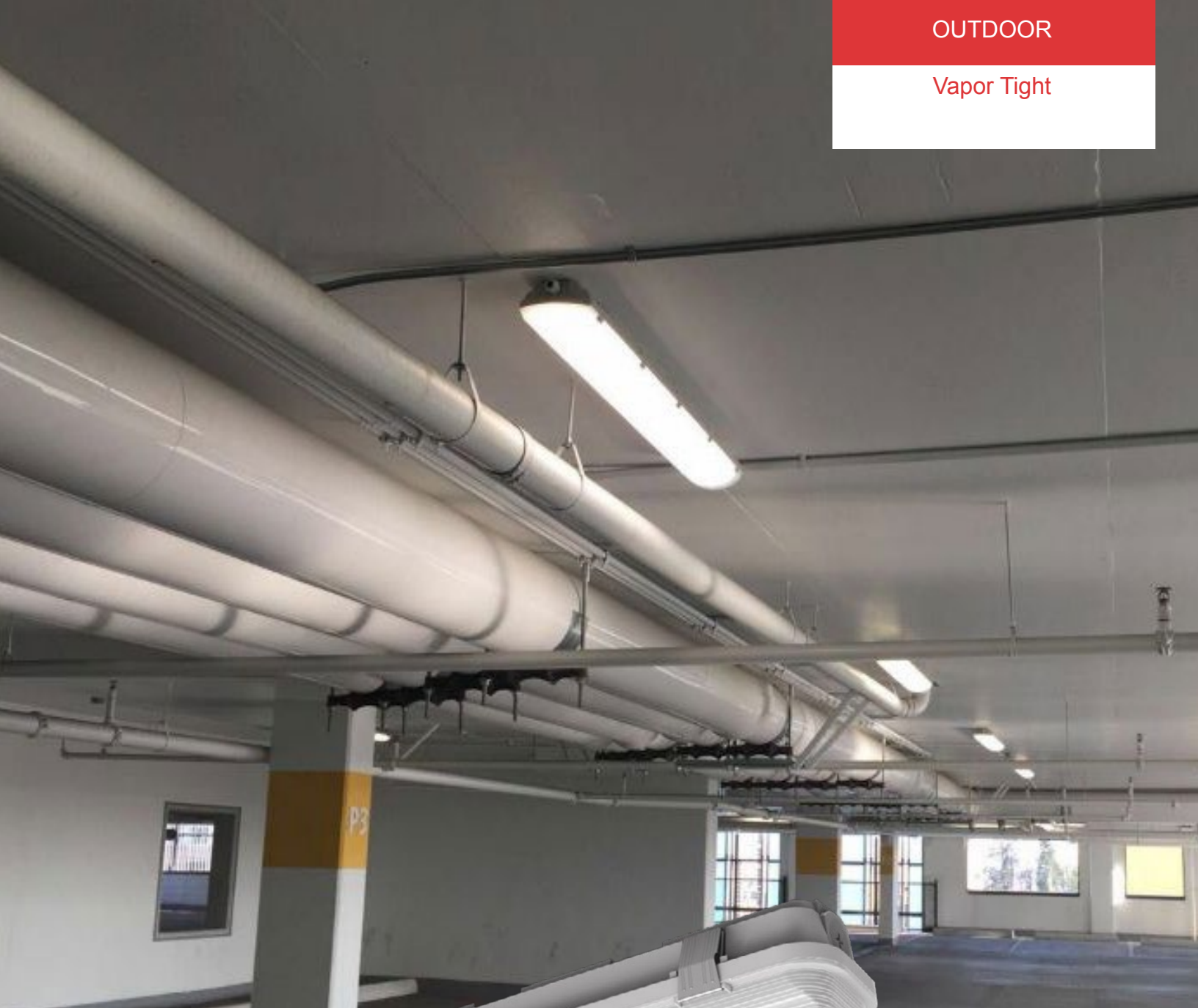


Intertek



OUTDOOR

Vapor Tight



- Die-cast aluminum and tempered glass globe
- Ceiling, wall and pendant mount
- Glass lens and wire guard



OUTDOOR

Poulynoe LED
Wall Light



The Poulynoe wall light is designed in an architecture round shape and full cut-off design. It combines aluminium structure and glass lens in one integral beautiful streamlined shape. Suitable for both indoor and outdoor wall light application.



OUTDOOR

Cylinder LED Wall Light

The Cylinder wall light is designed in a cylinder shape with durable powder coat paint. It combines aluminium structure with a tempered glass diffuser radiating light downward against the wall where installed.



Firefly Lantern

The Firefly Lantern wall light combines aluminum with durable powder coat paint in traditional lantern style. Glass diffuser with special design to achieve wonderful lighting visual impression and enables soft light distribution. Especially designed for exterior wall mount applications under the roof such as Villa, courtyard garden and public squares.



OUTDOOR

Thetis LED Wall Light

The Thetis wall light comes in glass diffuser with special design. It seems heavy rains are falling down on the glass during a storm and enables soft light distribution. Especially designed for indoor/ outdoor wall mount applications.



OUTDOOR

Eudora



The Eudora wall light offers a sleek, clean profile. It combines aluminum construction with clean lines and right angles and glass shade. Designed for indoor/outdoor wall mount applications.



OUTDOOR

Poulynoe Large LED Wall Light

The Thetis wall light comes in glass diffuser with special design. It seems heavy rains are falling down on the glass during a storm and enables soft light distribution. Especially designed for indoor/outdoor wall mount applications.



OUTDOOR

Spot

The Spot wall light is designed in a spot light shape. It combines aluminium structure and glass lens. Swivel Knuckle can make angle adjustable, ideal for accent lighting.



OUTDOOR

Ploto



The Ploto wall light combines aluminum with durable powder coat paint in traditional portable style. This durable indoor/outdoor wall light offers advanced LED technology discreetly hidden in its robust housing.



OUTDOOR

Starrysky



The Starrysky wall light comes in simple shape design. Glass diffuser with special design to achieve wonderful lighting visual impression and enables soft light distribution. Especially designed for indoor/ outdoor wall mount applications.



OUTDOOR

Erato



The Erato wall light combines galvanized steel with durable powder coat paint and opal glass in traditional lantern style with wire guard in beautiful patterns design to create delightful shadow patterns on adjoining wall surfaces and walkways.



OUTDOOR

HORIZONTAL Mini LED Step Light

3 W LED step/wall lights are available in a horizontal configuration for mounting into a Junction box. For poured concrete and masonry installations. For indoor and protected outdoor use.



OUTDOOR

VERTICAL
Mini LED Step Light

3W LED step/wall lights are available in a vertical configuration for mounting into a Junction box. For poured concrete and masonry installations. For indoor and protected outdoor use.



OUTDOOR

Trumpet LED Wall Light

- Ideal for lighting up signs and facades
- Swivel Knuckle can make adjustable angle to 210°
- Photocell sensor optional for use as dusk to dawn light
- Easy-mount integral mounting canopy



OUTDOOR

Selectable Trumpet LED
Wall Light



- Ideal for lighting up signs and facades
- Wattage and CCT selectable
- Swivel Knuckle can make adjustable angle
- Photocell sensor available for use as dusk to dawn light



OUTDOOR

Thoe LED Wall Light



- Die-cast aluminum housing
- AC LED, without driver
- Clear glass lens
- Direct and indirect light
- IP65 for wet locations



OUTDOOR

Villa Wall Light



- Architectural grille style and milky polycarbonate lens enables soft light distribution
- Wide voltage 120-347V available for 18W and 29W
- Sealed decorative housing suitable for wet locations
- 90 CRI is standard
- Easy-mount needs to be close back plate
- Cold temperature rated



OUTDOOR

Solid Step And Wall Light



- Up to 1800lm for various step and wall lighting applications
- Recessed light resource and step-shaped design is good for glare elimination
- Various mounting options
- Heavy duty cast aluminum housing and tempered glass lens



OUTDOOR

OFM Ceiling Light (Round)

- Die-cast aluminum body and polycarbonate lens
- Round and square shape optional
- Driverless design
- Suitable for wet locations



OUTDOOR

OFM Ceiling Light (Square)

- Die-cast aluminum body and polycarbonate lens
- Round and square shape optional
- Driverless design
- Suitable for wet locations



INDOOR

(VRO) Vicky Ring Outward
Light Acoustic Light

- Fixtures in diameters from 23.6" through 59.1"
- Round and square shape optional
- Driverless design
- Suitable for wet locations

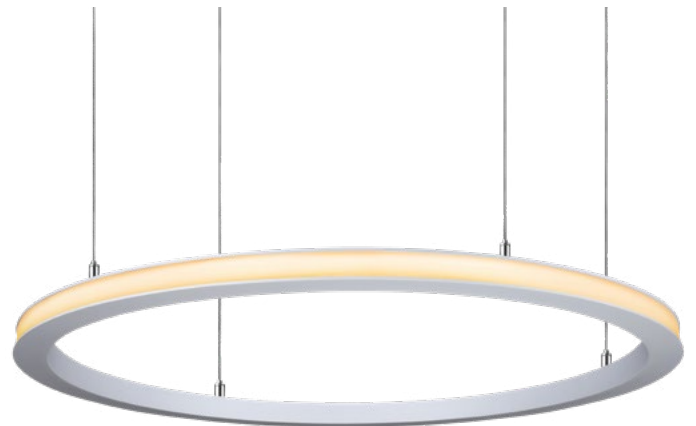


INDOOR

(VRO) Vicky Ring Outward
Light



- Fixtures in diameters from 23.6" through 59.1"
- Round and square shape optional
- Driverless design
- Suitable for wet locations



INDOOR

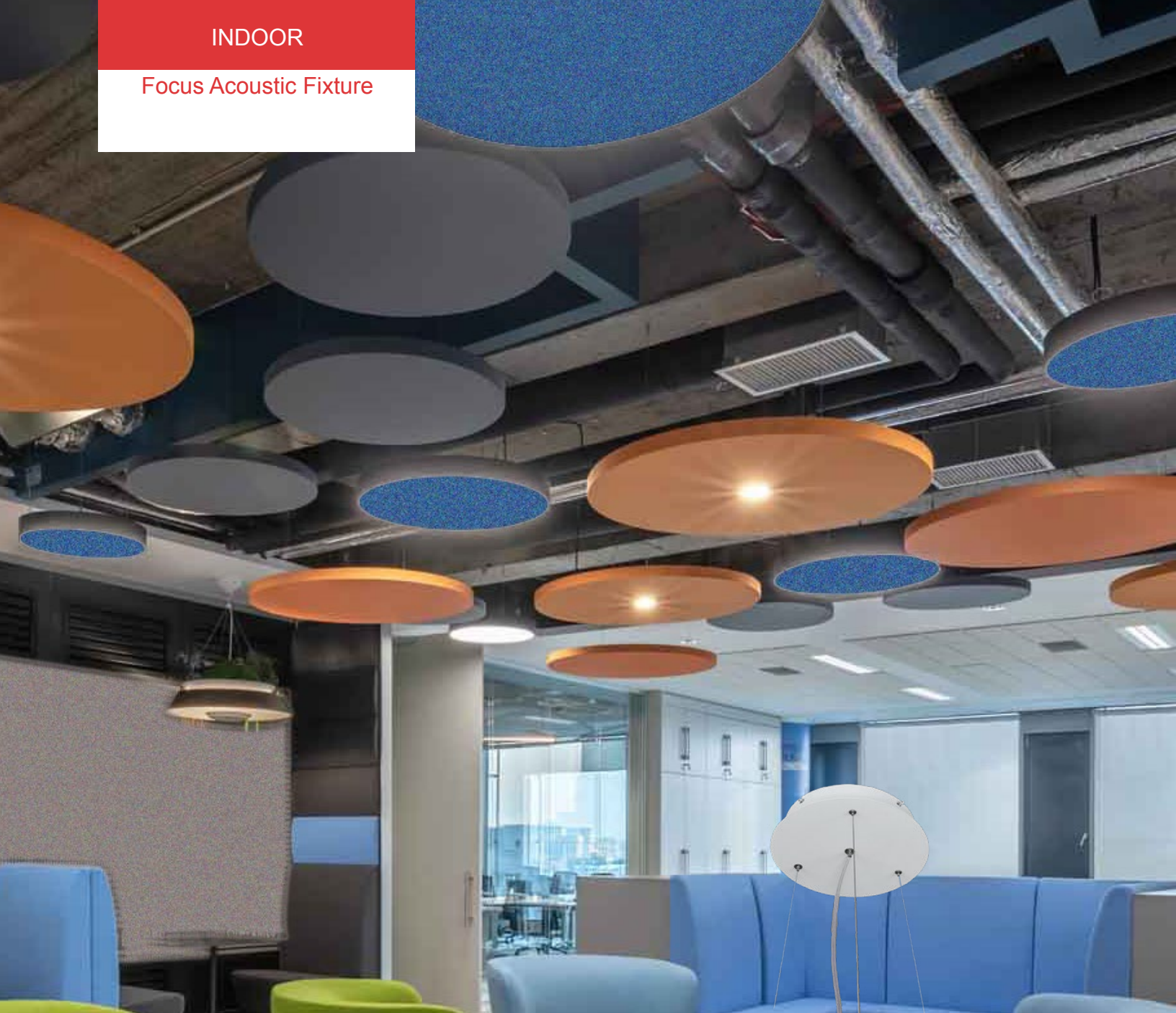
(VRI) Vicky Ring Inward
Light

- Fixtures in diameters from 23.6" through 59.1"
- Available in standard light and acoustic w/light.
- Illuminating from the inner surface
- Pendant and surface mounted
- 35 acoustic felt colors available



INDOOR

Focus Acoustic Fixture

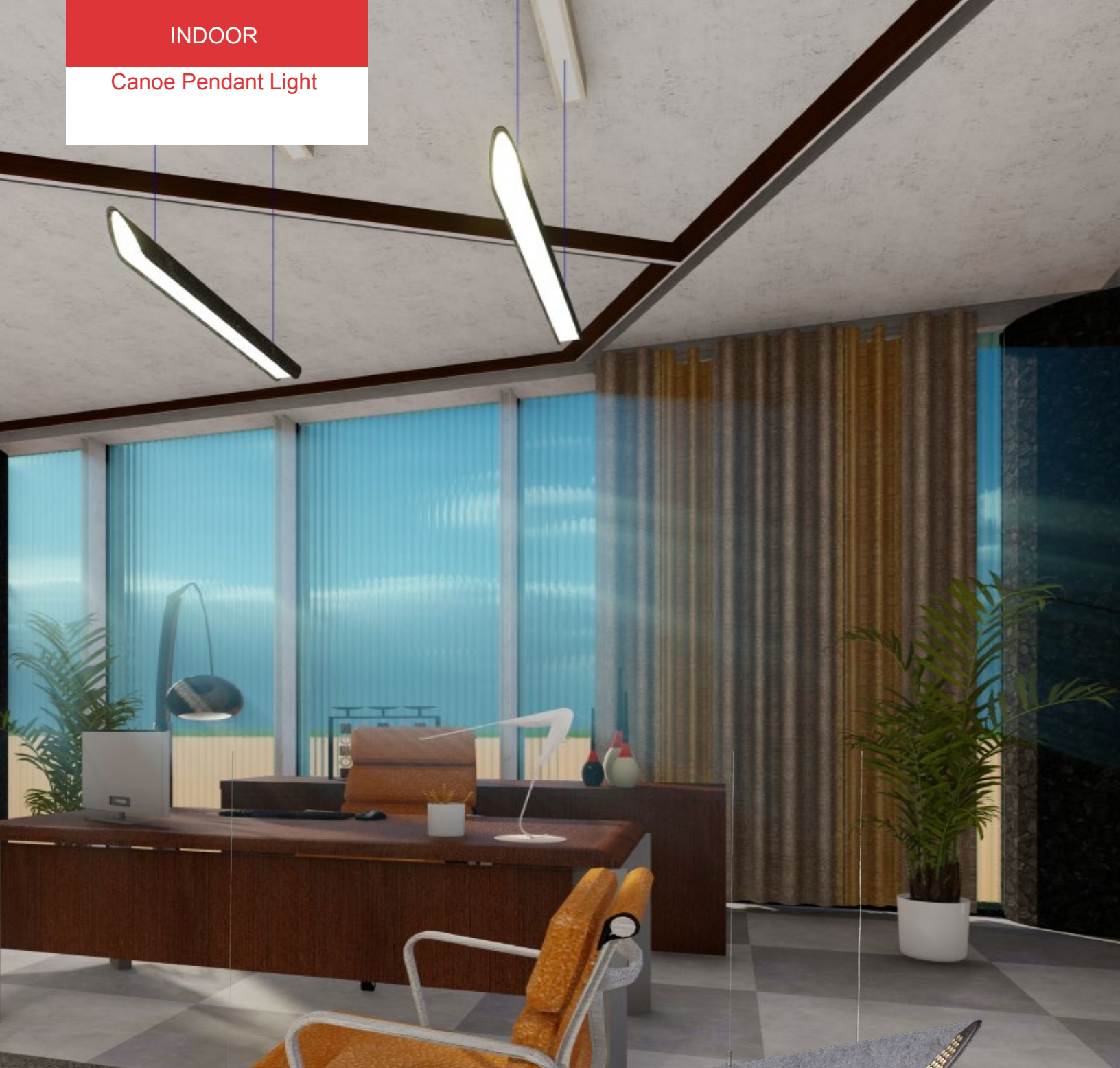


The Focus Acoustic Fixture offers the FOCUS family in sizes ranging from 11.8".(dia.) up to 47.2".(dia.). Aluminum body constructions. Working harmoniously with acoustic materials to reduce the noise-levels in any space. Maximizes surface area to absorb sound waves and improve harmony in the installed space. Flexible installations come in pendant and surface mounted.



INDOOR

Canoe Pendant Light

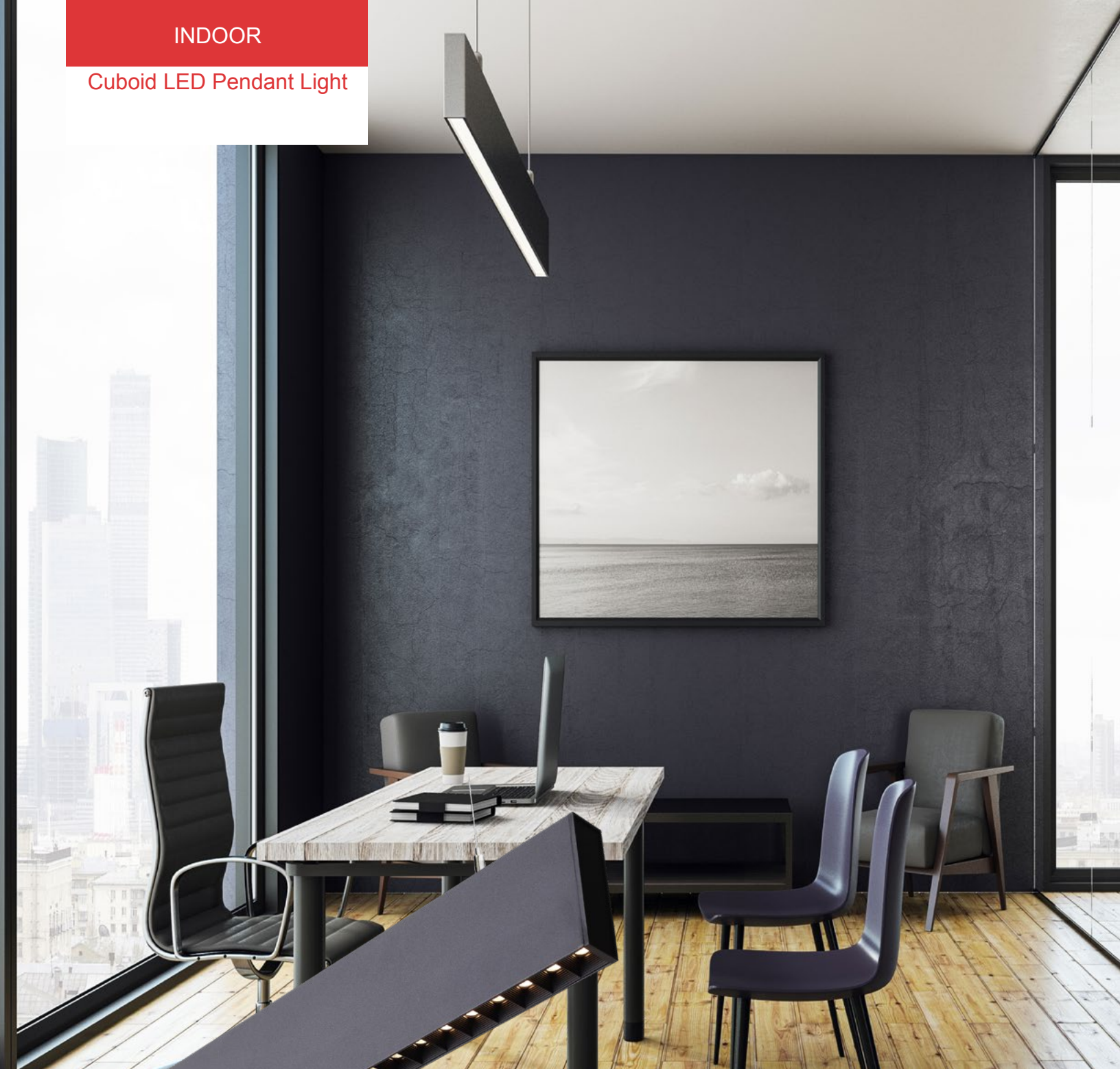


- Three-dimensional arc design of the end
- Aluminum alloy body and die-casting ends
- Various fabric colors available
- Honeycomb lens



INDOOR

Cuboid LED Pendant Light



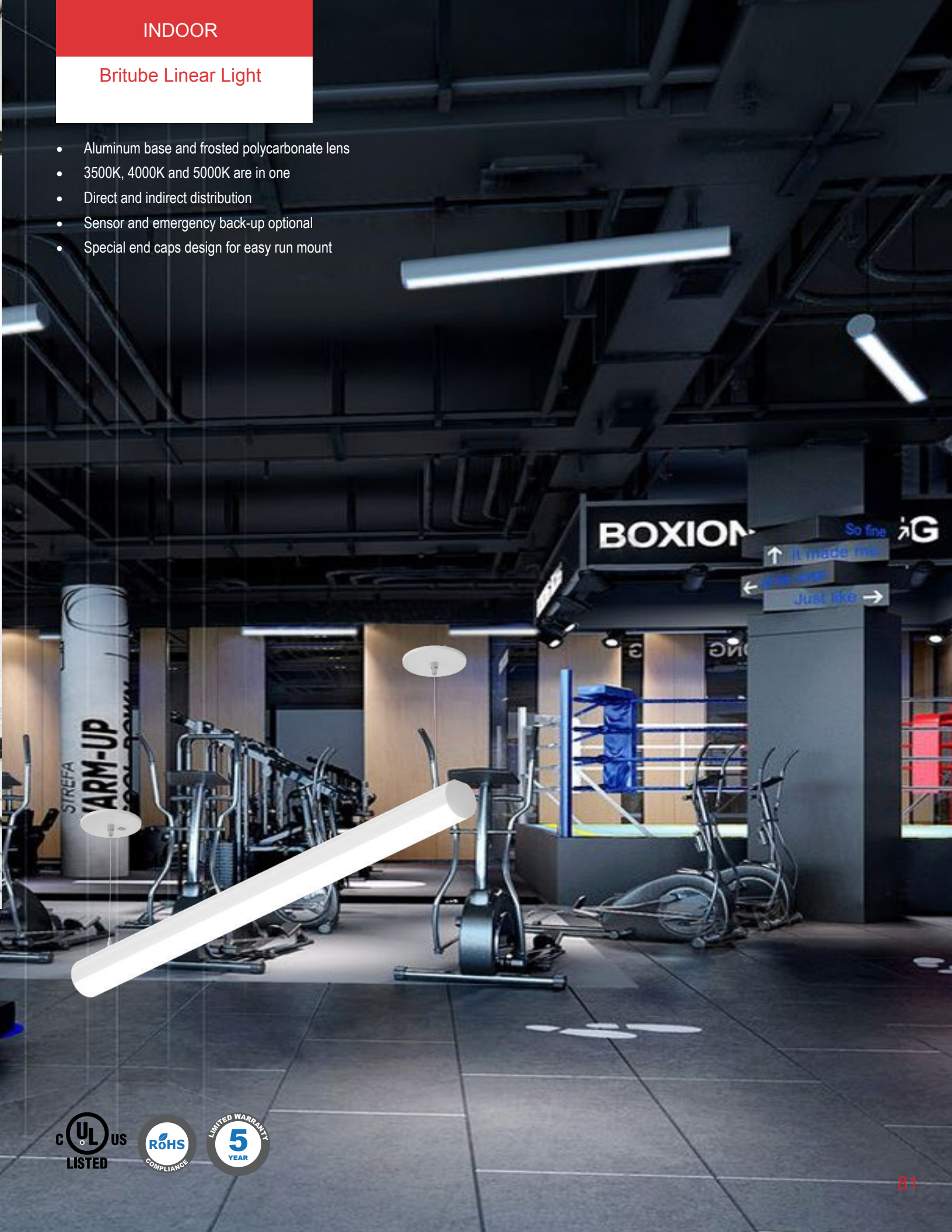
- Anti-glare louver lens
- Die-casting aluminum body
- Direct and indirect distributions



INDOOR

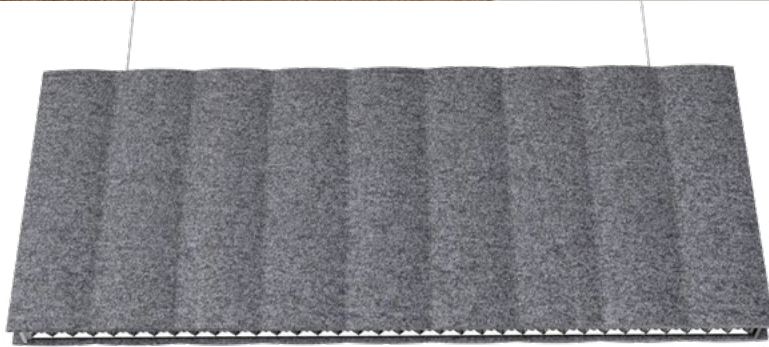
Britube Linear Light

- Aluminum base and frosted polycarbonate lens
- 3500K, 4000K and 5000K are in one
- Direct and indirect distribution
- Sensor and emergency back-up optional
- Special end caps design for easy run mount



INDOOR

Corrugated Acoustic Light



- Corrugated surface design for better sound absorbing
- Sound absorbing polyester fiber
- Deep anti-glare cup optics
- Various finish colors available



INDOOR

Wingsuit Acoustic Light

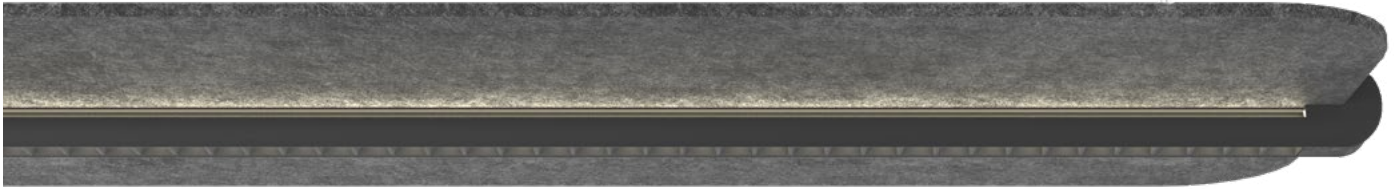
- Sound absorbing polyester fiber
- Deep anti-glare cup optics
- Direct and indirect distribution
- Soft side distribution



- Direct and indirect distribution



- Sound absorbing polyester fiber



- Soft side distribution

- Deep anti-glare cup optics



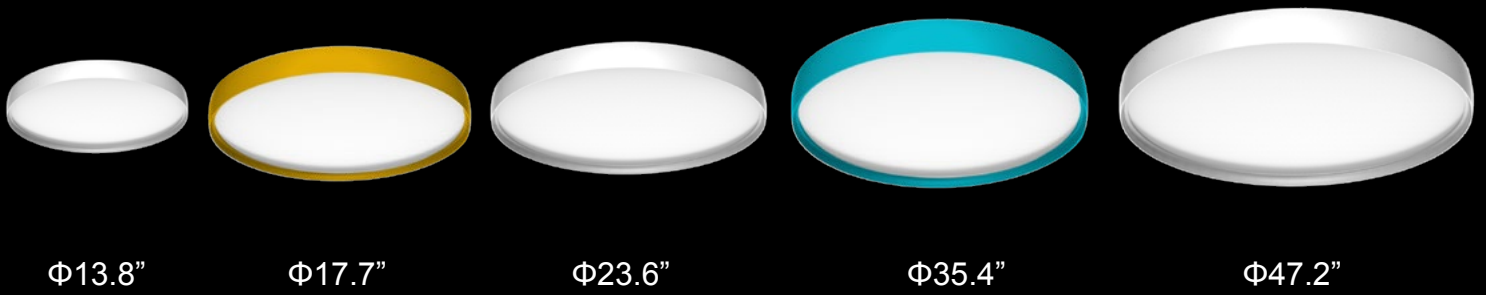
INDOOR

Focus Round Light

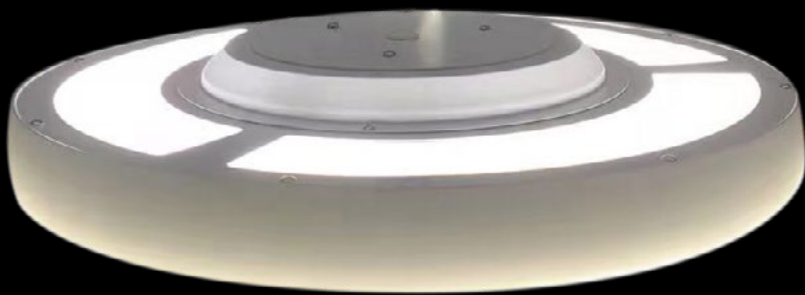


- Fixtures in diameters from 13.8" through 47.2"
- Recessed light source design achieving perfect glare control
- Edge-lit technology and non-yellowing optical PMMA
- Rod and Aircraft Cable Pendant mounted and surface mounted
- Special end caps design for easy run mount





Downlight Illumination
Recessed light source design achieving perfect glare control. Edge-lit technology and non-yellowing microprismatic optical PMMA.



Uplight & Downlight
Flexible installations come in pendant, surface and wall mounted. Direct and indirect light distributions.

INDOOR

ARC Linear Pendant



- Aluminum base and frosted polycarbonate lens
- 3500K, 4000K and 5000K are in one
- Direct and indirect distribution
- Sensor and emergency back-up optional

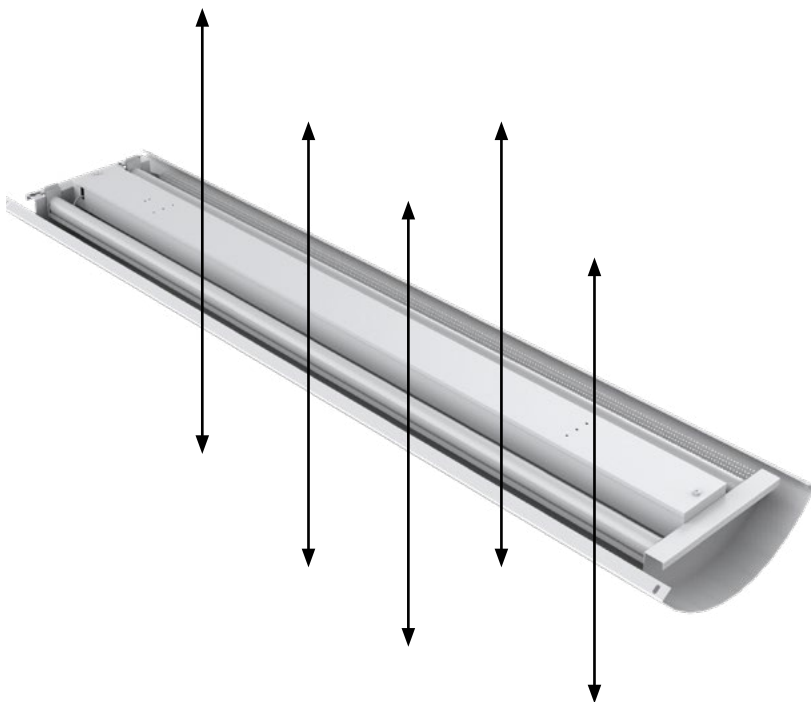




- Aluminum louver and no louver design



- 3500K, 4000K and 5000K are in one



- Direct and indirect distribution

- Sensor and emergency back-up optional



INDOOR

Soar Pendant Light

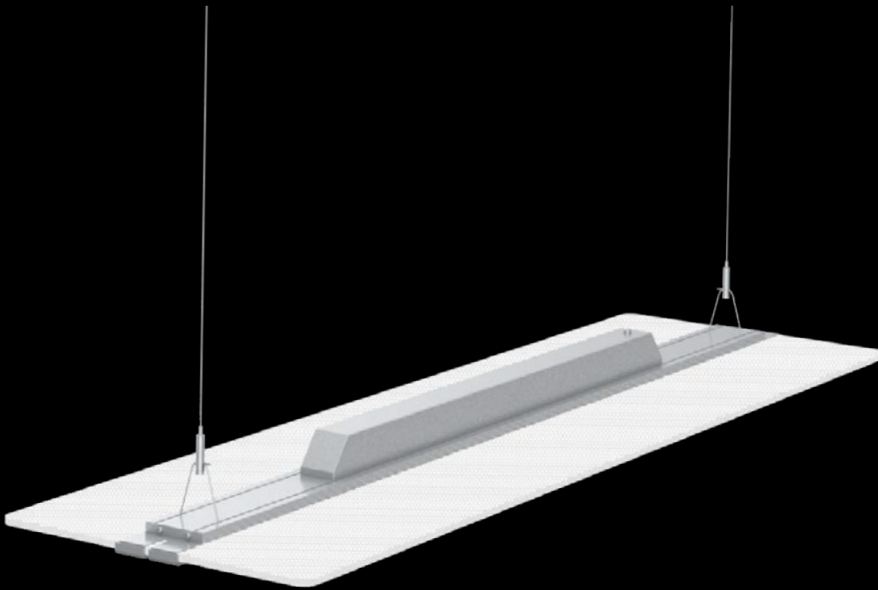
- Mitsubishi light guide plates
- Sturdy and corrosion-resistant aerometal structure
- Direct and indirect distribution
- Transparent flashing wings appearance
- 0-10V dimming





- Mitsubishi light guide plates

- Sturdy and corrosion-resistant
aerometal structure



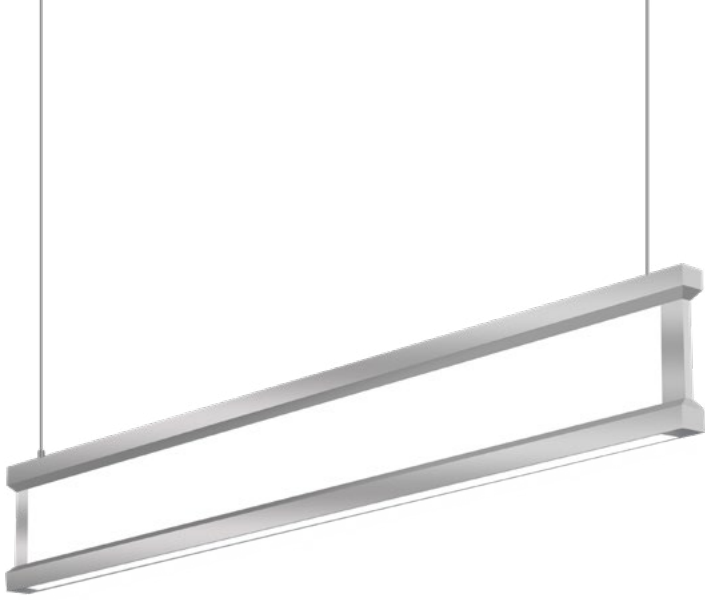
- Direct and indirect distribution

INDOOR

Vagary Pendant Light

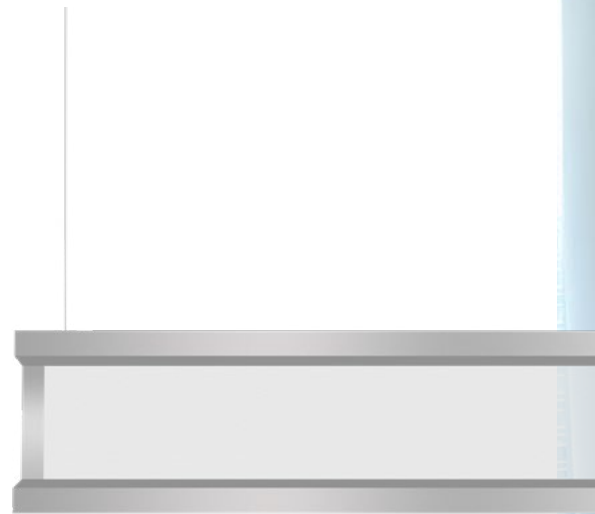
- Sleek and elegant minimalist Design
- Transparent optic and edge-lit
- Integral driver, isolated circuit
- Seamless continuous run mount
- CCT selectable available





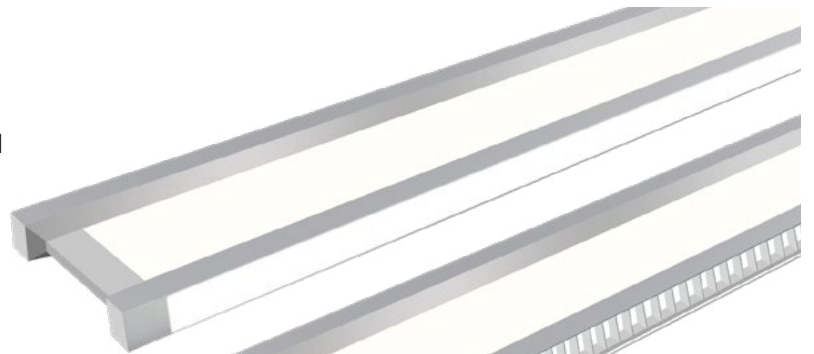
3000K 3500K 4000K

CCT SELECTABLE



Sleek and Elegant Minimalist Design

Diffused



Louver

INDOOR

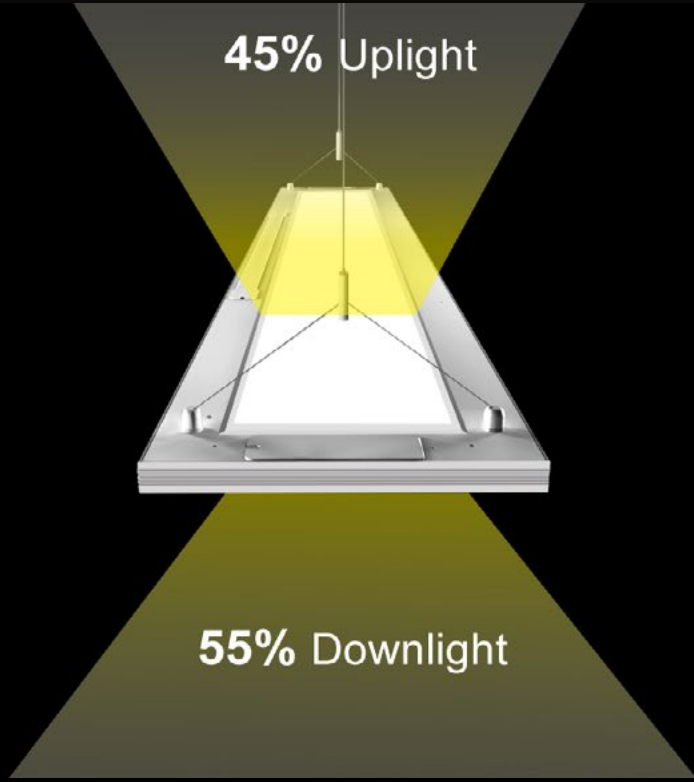
SLAB Pendant Light

- Sleek and elegant minimalist Design
- Transparent optic and edge-lit
- Integral driver, isolated circuit
- Seamless continuous run mount
- CCT selectable available



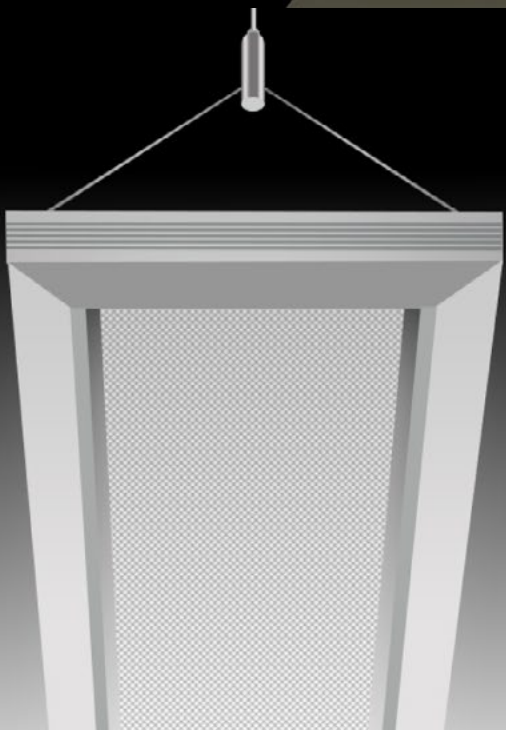


Seamless Continuous Run Mount



45% Uplight

55% Downlight



Transparent Optic And Edge-lit

INDOOR

Glauce Wall Linear
(Perforation)

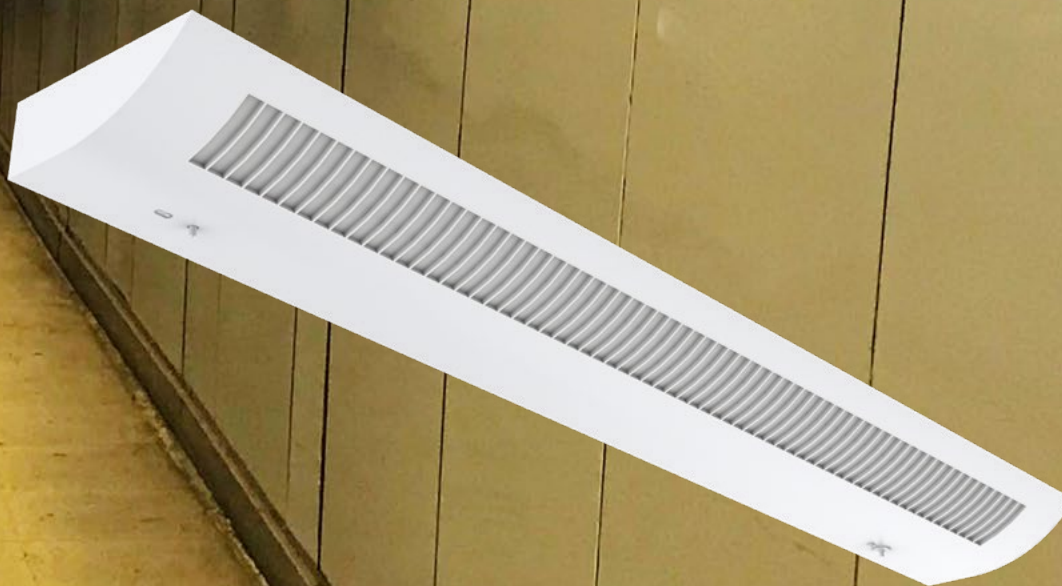
- Sleek wall mounted linear design
- Perforation and Louver luminous design
- Length comes in 2FT and 4FT
- 3500K, 4000K and 5000K are in one
- Direct and indirect distribution
- Sensor and emergency back-up optional



INDOOR

Glauce Wall Linear (Louver)

- Sleek wall mounted linear design
- Perforation and Louver luminous design
- Length comes in 2FT and 4FT
- 3500K, 4000K and 5000K are in one
- Direct and indirect distribution
- Sensor and emergency back-up optional



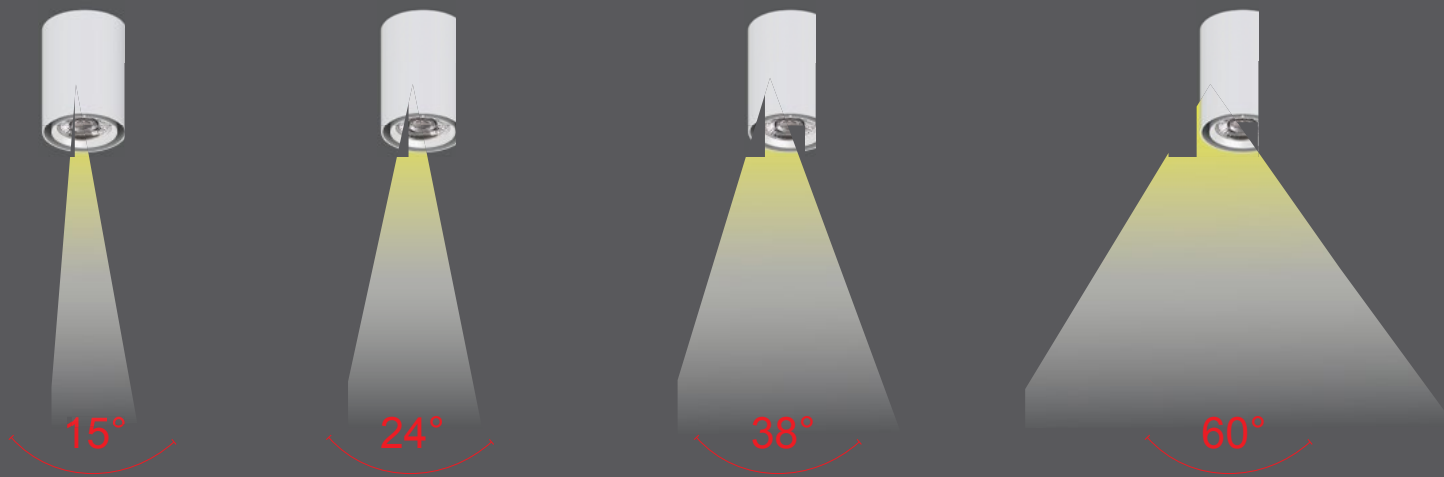
INDOOR

Magic Cylinder Light



- Tool-less modular design
- Monopoint pendant , surface and track mounted
- Interchangeable Beam Spread: 15°/24°/38°/60°/38°/60°
- Anti-glare design to reduce glare light
- Triac dimmable, compatible with both by MLV or ELV dimmer
- Integral driver, isolated circuit
- Cree LED chips, CRI90





Interchangeable Beam Spread: 15°/24°/38°/60°



Track Mounted



Pendent



Spotlight



Surface



H-type Single Circuit



J-type Single Circuit



L-type Single Circuit

INDOOR

Selectable ECO Vision Strip
Light

3000K 3500K 5000K

CCT SELECTABLE

WATTAGE SELECTABLE

- 3000K, 3500K and 4000K selectable
- Wattage selectable
- 8% up-light and no glare
- Quick and Easy to wire and install
- Built-in sensor
- Ceiling & wall surface mounted, suspension mounted



INDOOR

ECO Vision Strip Light

- 8% up-light and no glare
- Quick and Easy to wire and install
- Seamless connection
- Built-in sensor
- EBU backup available
- Ceiling & wall surface mounted, suspension mounted

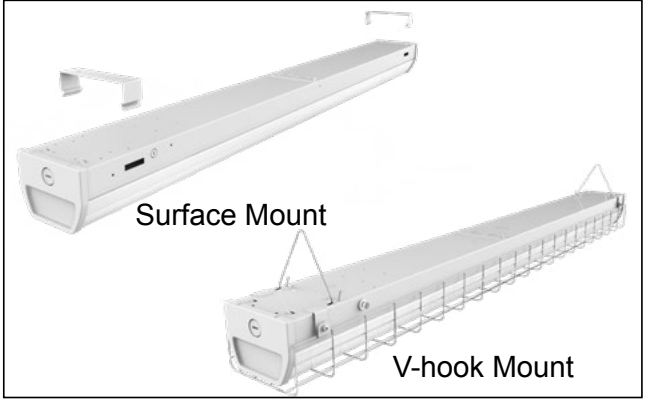
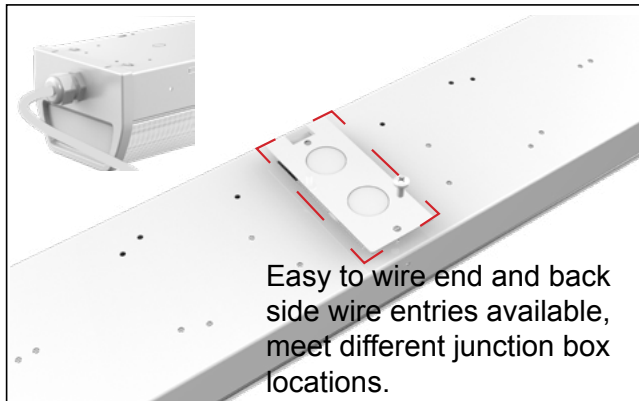
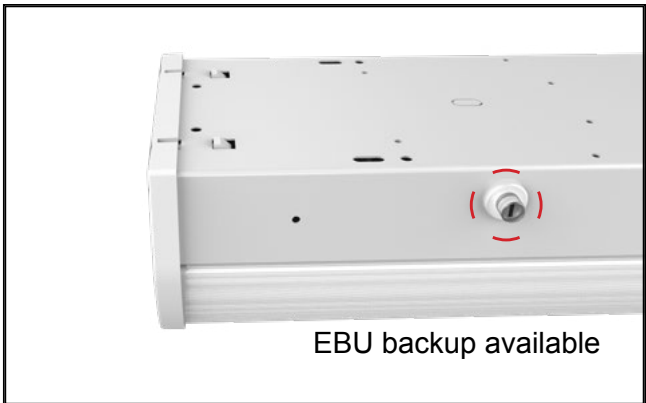
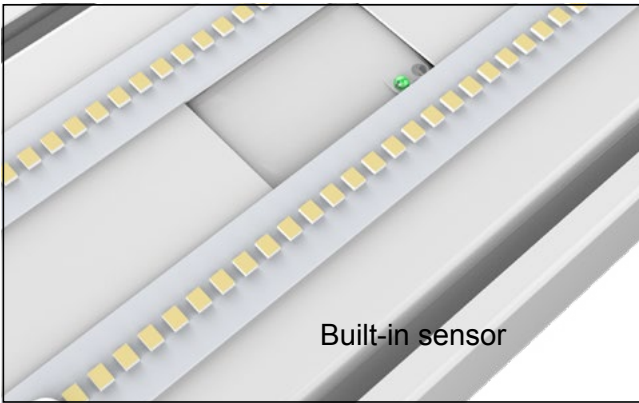


INDOOR

Vision Strip Light

- 8% up-light and no glare
- Quick and Easy to wire and install
- Seamless connection
- Built-in sensor
- EBU backup available
- Ceiling & wall surface mounted, suspension mounted





INDOOR

GEN3 CCT/Wattage
Selectable Slim Strip Light



- Wide voltage 120-347V
- Wattage selectable
- CCT selectable (3000K, 3500K, 4000K in one)
- 8% up-light and no glare
- Apertured reflector optional
- Microwave motion sensor available



INDOOR

GEN2 Slim Strip Light

3000K 3500K 4000K

CCT SELECTABLE

WATTAGE SELECTABLE

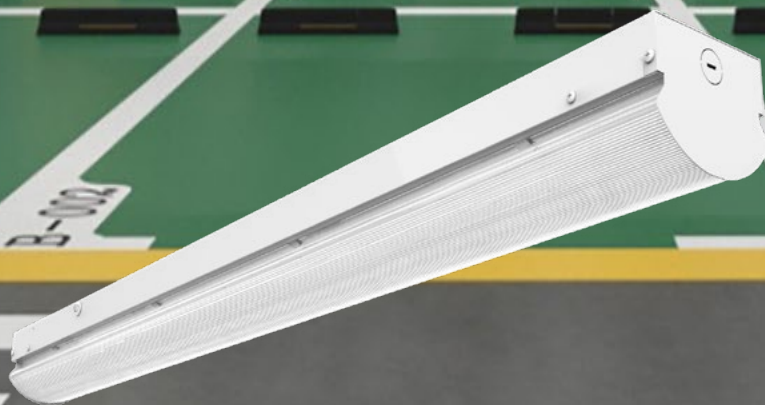
- Wide Voltage 120-347V
- Length comes in 2ft, 4ft and 8ft
- 8% up-light and no glare
- Microwave motion sensor available
- Apertured reflector optional



INDOOR

Selectable ECO Vision Strip Light

- Wide voltage 120-347V
- Length comes in 2ft, 4ft and 8ft.
- 8% up-light and no glare
- Microwave motion sensor available
- Apertured reflector optional



INDOOR

Integrate T-grid Linear Light

- Mounting brackets and led module are detachable
- Triple-side unique optic design
- Various standard 15/16" or 9/16" ceiling mount compatible
- Seamless continuous runs
- Flexible lighting patterns achievable
- RJ45 terminals for easy driver connection

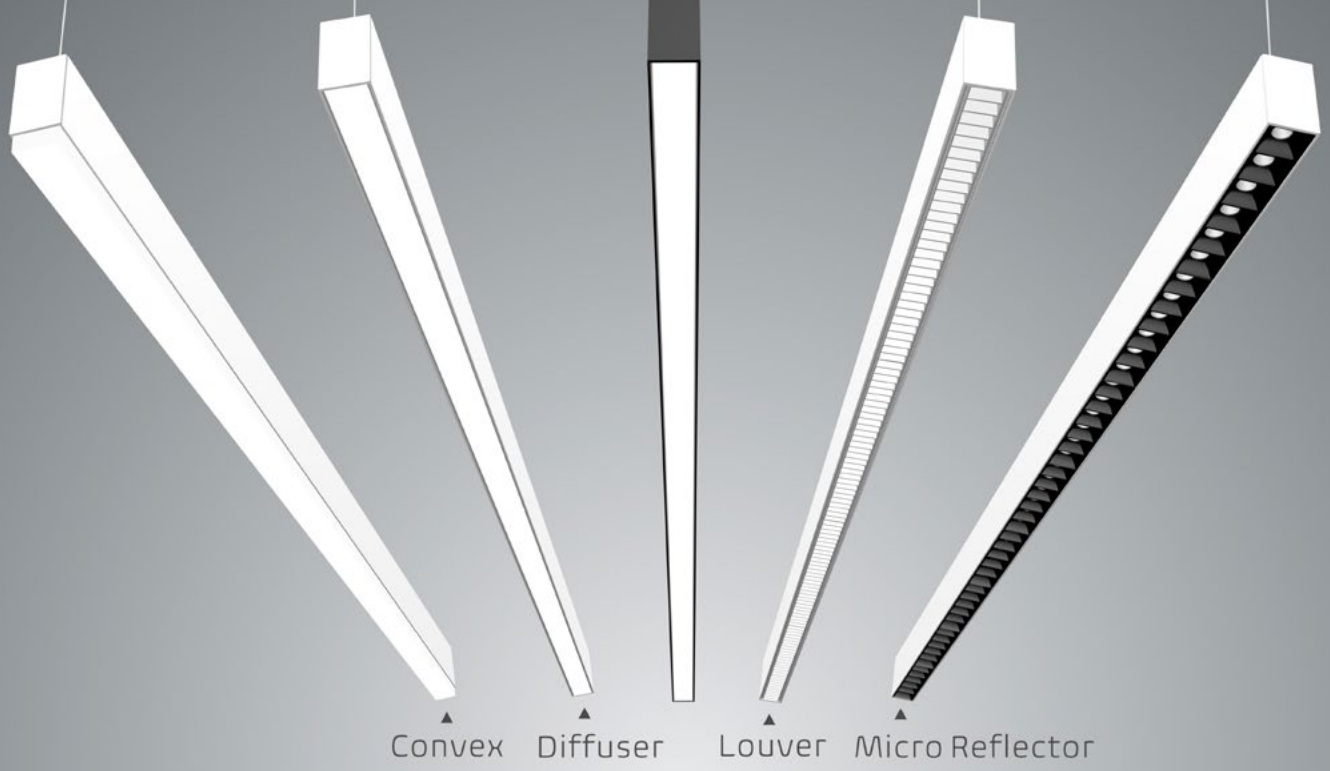


INDOOR

MAGIC LED Linear

- Comes in lengths of 2', 4', and 8'
- Direct and indirect available
- Available with several lit joiner accessories for unlimited lighting pattern design
- Professional lenses available in flush diffused, louver, micro reflector and drop lens
- Surface, pendant and wall mount optional
- Microwave Sensor and EBU are available





MAGIC LED Linear Fixture (X Design)



MAGIC LED Linear Fixture (Custom Design)



MAGIC LED Linear Fixture (L Design)



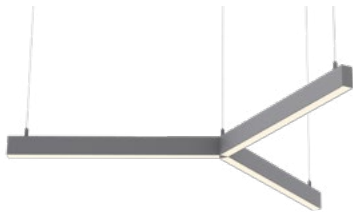
MAGIC LED Linear Fixture (S Design)



MAGIC LED Linear Fixture (T Design)



MAGIC LED Linear Fixture (U Design)



MAGIC LED Linear Fixture (Y Design)

INDOOR

Heavenly Linear High Bay

- Textured lens diffusions minimizes high glare
- Achieves up to 149 °F (65 °C) ambient rating
- Performs at up to 180 lm/W
- 10kV surge suppression protection optional





Polycarbonate Frosted



Acrylic Frosted Lens



Acrylic Clear Lens

A graphic comparing two temperature scales. On the left, a red background features the text **65°C** in white. In the center is a thermometer with a red liquid column. On the right, a black background features the text **149°F** in red. Above the Fahrenheit text is a yellow square with the word **THERMAX** in black, a white square in the center, and the text **°C 65** on the left and **°F 149** on the right.



Wattstopper Motion Sensor



Enlighted Motion Sensor

INDOOR

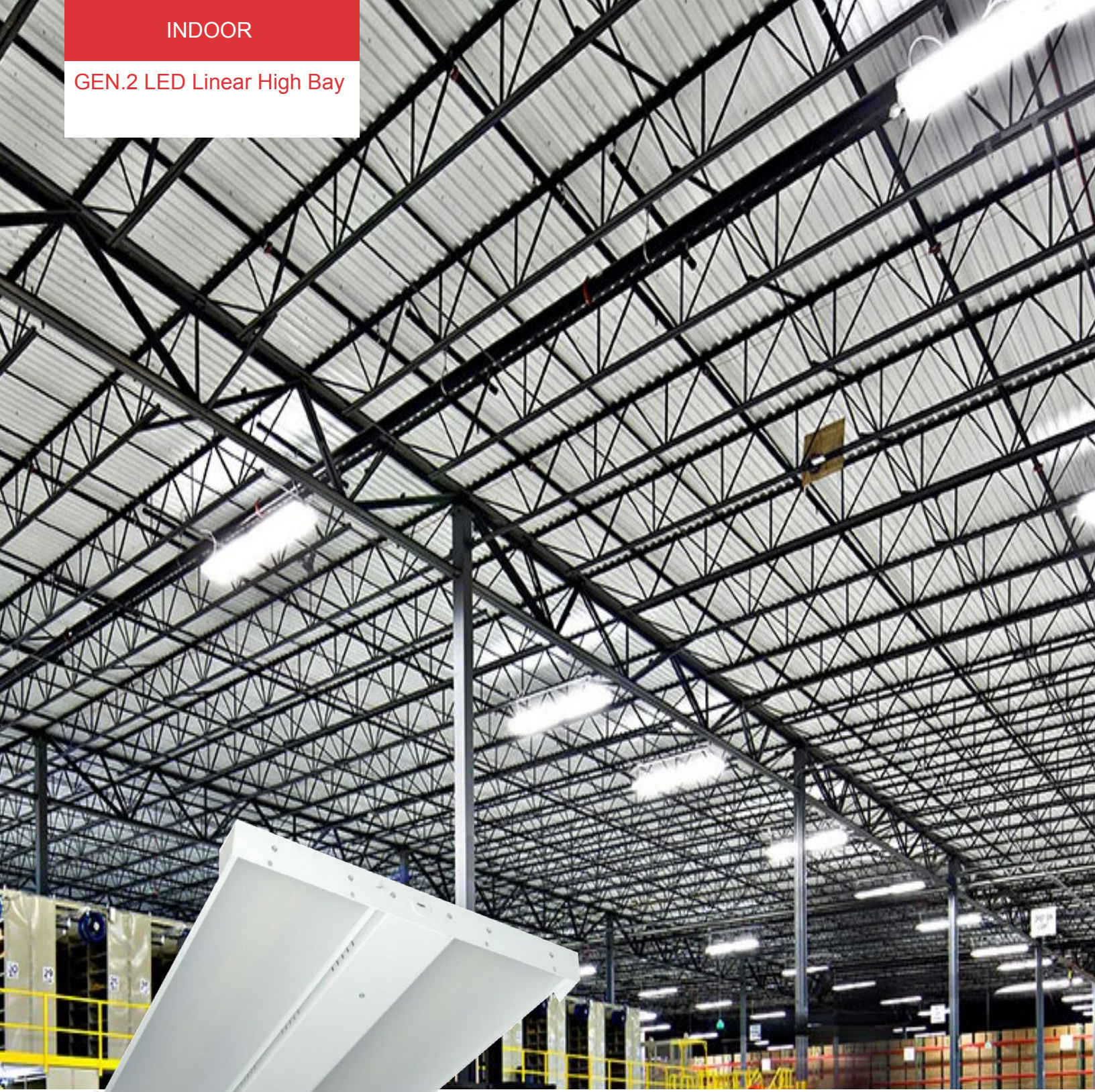
Linear High Bay

- Top 5 led chip and driver
- Motion sensor and EBU available
- Wire guard, 120V and 277V plug and cord available



INDOOR

GEN.2 LED Linear High Bay



- Comes in 2ft and 4ft, up to 52,000lm
- DLC premium listed
- Wide voltage from 120V to 347V
- Various Sensor options
- Wire Guard and different mounting kits available



INDOOR

GEN.2 UFO High Bay

- Compact die-casting aluminum body design
- 60 and 90 degree reflector for option
- Microwave Motion Sensor available
- 347/480V for option
- Cold temperature

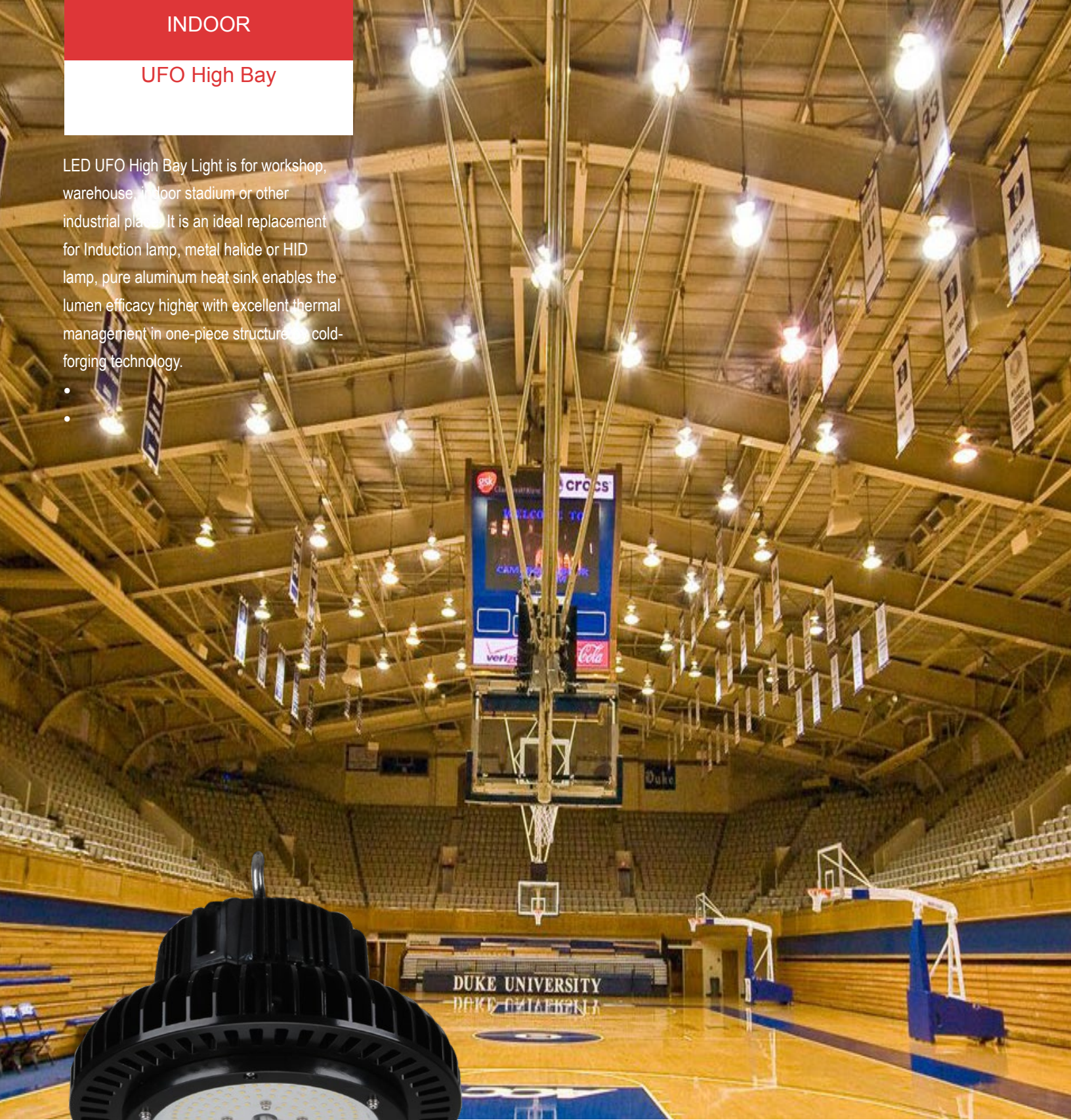


INDOOR

UFO High Bay

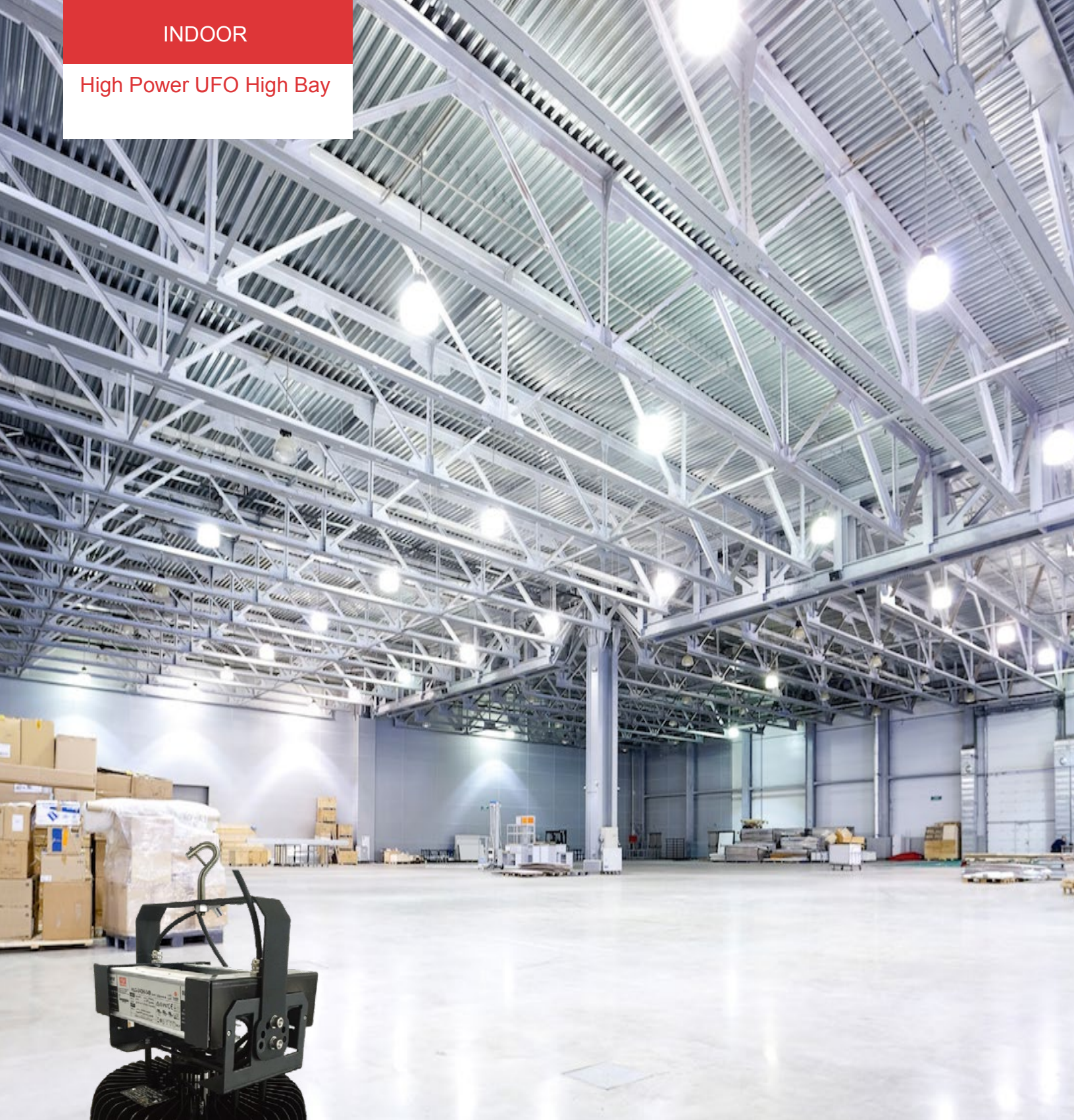
LED UFO High Bay Light is for workshop, warehouse, indoor stadium or other industrial place. It is an ideal replacement for Induction lamp, metal halide or HID lamp, pure aluminum heat sink enables the lumen efficacy higher with excellent thermal management in one-piece structure, cold-forging technology.

-
-



INDOOR

High Power UFO High Bay



High power LED UFO High Bay Light is for workshop, warehouse, indoor stadium and other industrial applications. It is an ideal replacement for Induction lamp, metal halide or HID lamp from 800W to 1500W. Pure aluminum heat sink enables the lumen efficacy higher with excellent thermal management in one-piece structure by cold-forging technology.



INDOOR

Door Frame Retrofit Kits 2x2

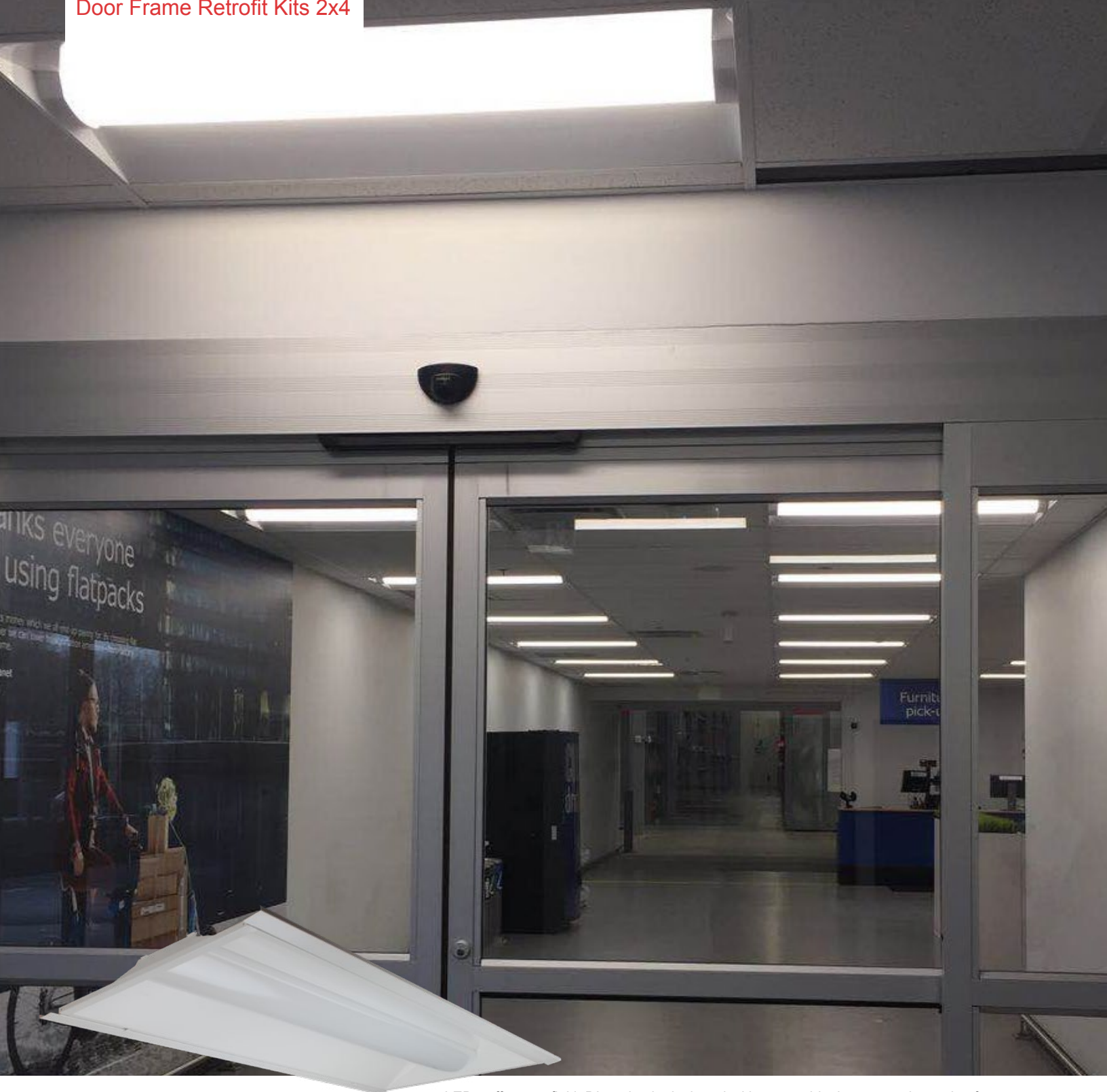


LED troffer retrofit kit DL series is designed without any black spots at the ends of the lens. It is suitable for office, hospital, and retail environments. The fixture is one piece and enclosed steel framed bracket. It is designed to upgrade fluorescent light fixture. Fully integrated reversible hinged. Assembly allows for rapid troffer conversion. Upgrade to modern full distribution architectural aesthetics providing controlled very soft, very well uniform light distribution. Easy installation and don't need to remove existing fixture housing. Available in both 2x2 and 2x4 configurations.



INDOOR

Door Frame Retrofit Kits 2x4

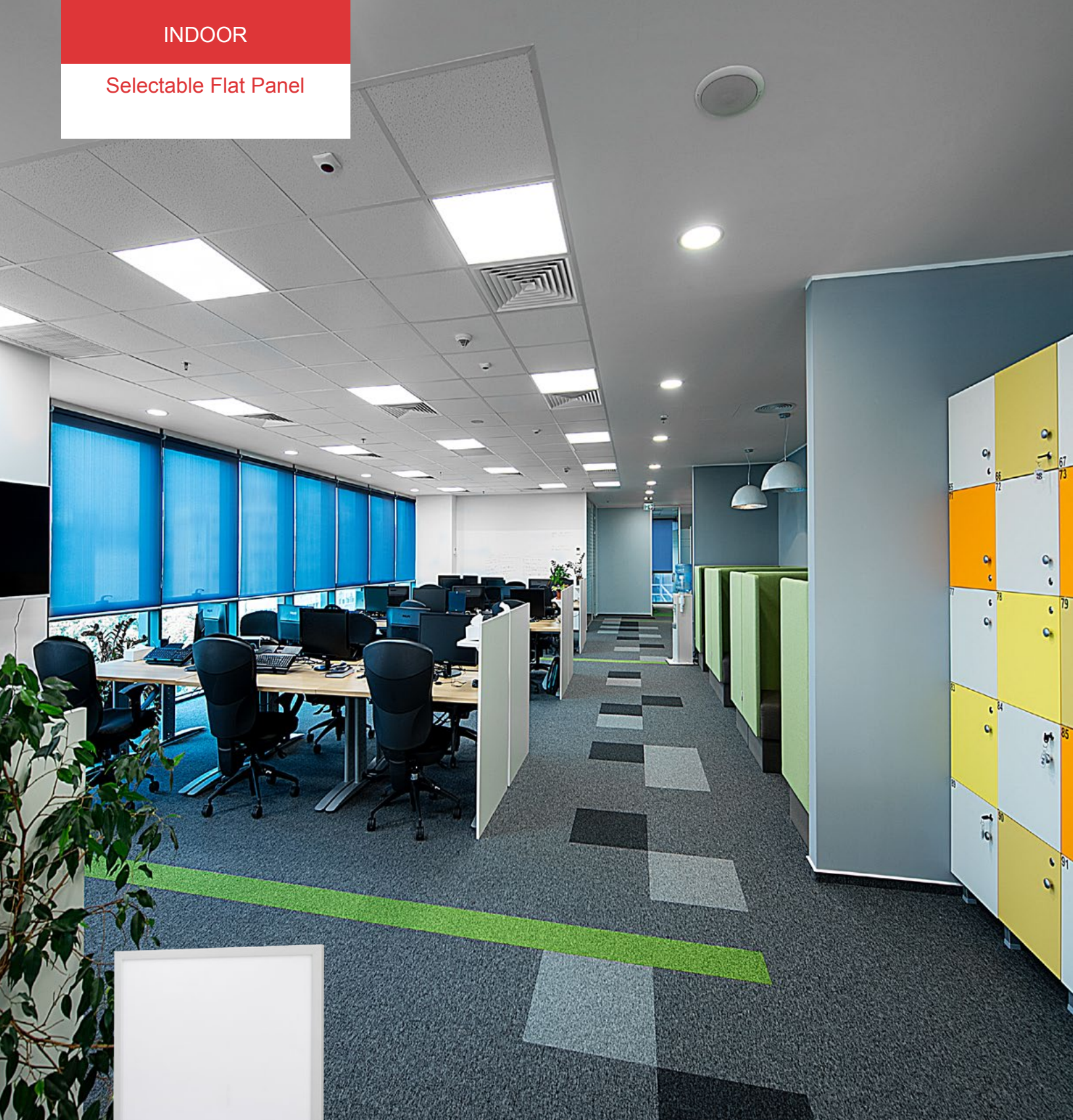


LED troffer retrofit kit DL series is designed without any black spots at the ends of the lens. It is suitable for office, hospital, and retail environments. The fixture is one piece and enclosed steel framed bracket. It is designed to upgrade fluorescent light fixture. Fully integrated reversible hinged. Assembly allows for rapid troffer conversion. Upgrade to modern full distribution architectural aesthetics providing controlled very soft, very well uniform light distribution. Easy installation and don't need to remove existing fixture housing. Available in both 2x2 and 2x4 configurations.



INDOOR

Selectable Flat Panel



- Wattage and CCT selectable
- 120-347V available
- Low-profile and edge-lit design
- PMMA LGP, never get yellowing



INDOOR

Flat Panel

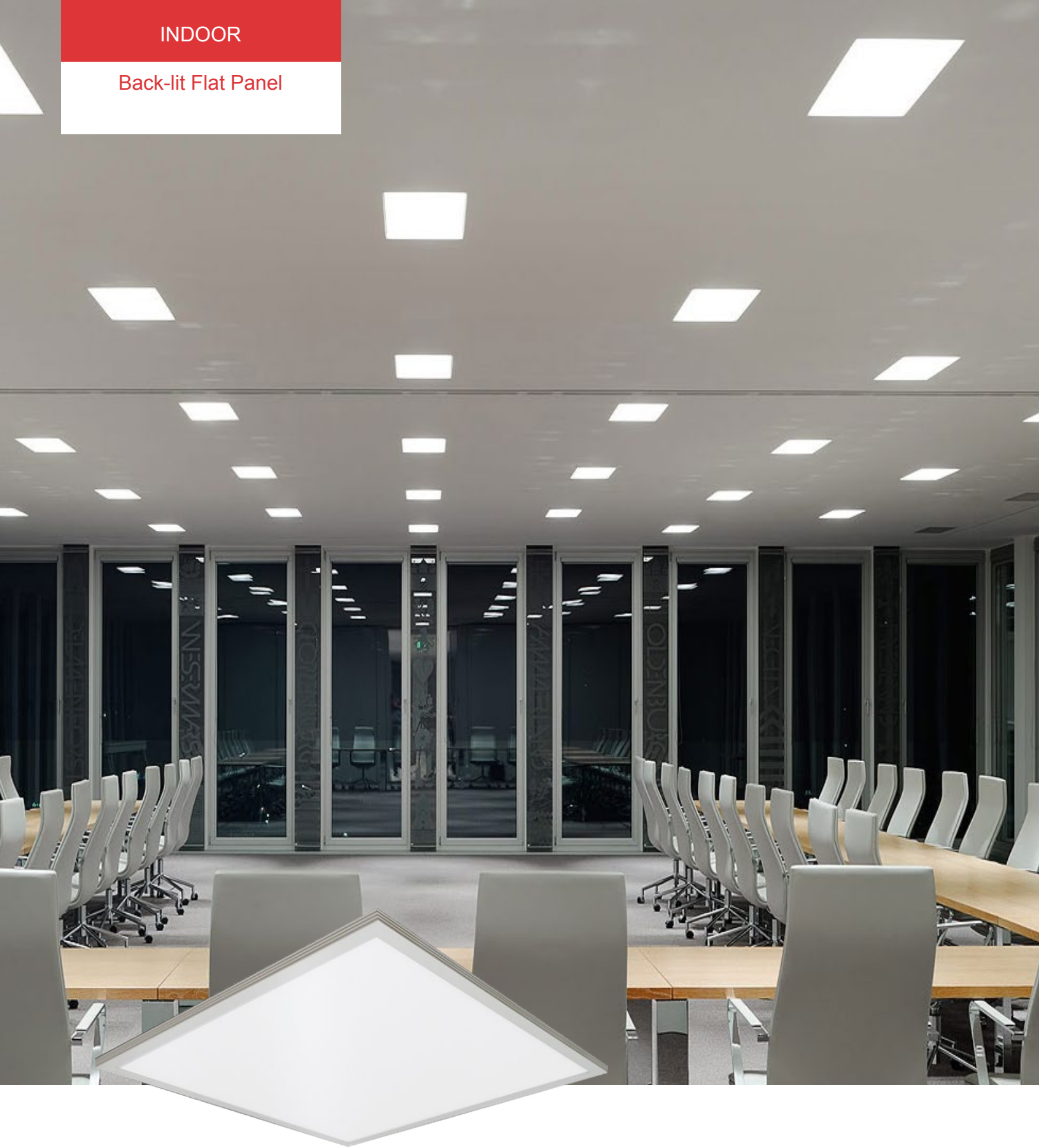


LED flat panel is designed for standard T-bar and narrow grid drop ceiling to replace fluorescent fixtures in offices, supermarkets, schools and other indoor applications. The edge-to-edge design enables even light distribution, simple but beautiful and easy for installation. Energy saving, long life span and low maintenance.



INDOOR

Back-lit Flat Panel

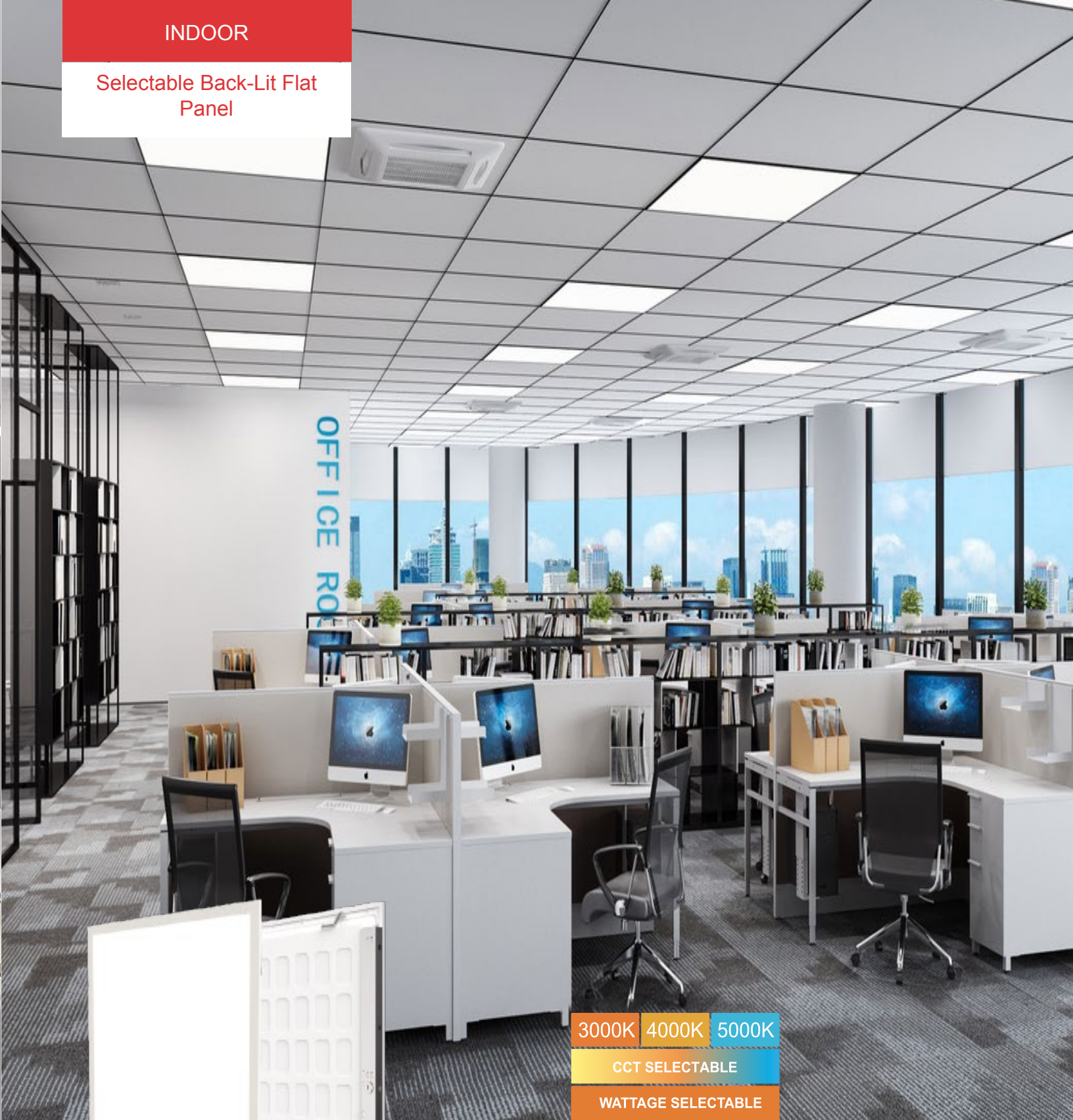


- 120-347V available
- Emergency battery back-up optional
- Low-profile and back-lit design
- Excellent color consistency and CRI



INDOOR

Selectable Back-Lit Flat
Panel



3000K	4000K	5000K
CCT SELECTABLE		
WATTAGE SELECTABLE		

- Wattage and CCT selectable
- 120-347V available
- No LGP, never yellowing
- High efficacy up to 125lm/w,
- Meet DLC 5.1 premium version



INDOOR

SKY Flat Panel

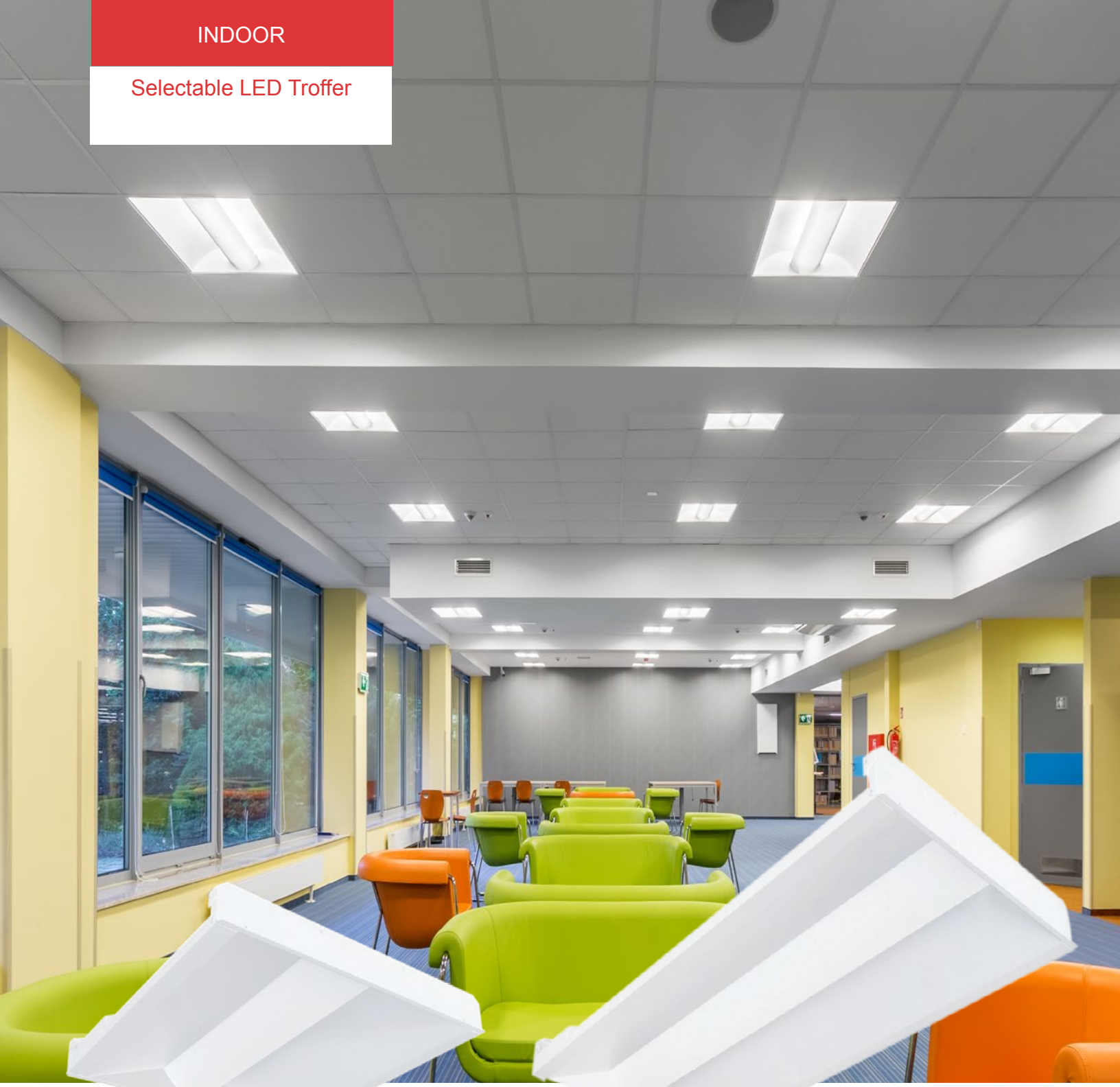


The SKY LED flat panel is designed for standard T-bar and narrow grid drop ceiling to replace fluorescent fixtures in offices, supermarkets, schools and other indoor applications. The Edge Lit design enables even light distribution, simple but beautiful and easy for installation. Energy saving, long life span and low maintenance.



INDOOR

Selectable LED Troffer



3500K	4000K	5000K
20W	25W	30W
SELECTABLE		

3500K	4000K	5000K
34W	38W	45W
SELECTABLE		



- Color temperature selectable
- Wattage selectable
- Emergency back up optional

INDOOR

Center Basket Troffer



The LED Center Basket Troffer is designed to replace the traditional 2x2 and 2x4 fluorescent troffer. It is suitable for office, super market, and hotel interior decoration. Modern design with high efficiency, high color rendering index and long life span.



INDOOR

RT Troffer



Led troffer is with textured/faceted PMMA diffuser, suitable for office, super market, and hotel interior decoration. It is designed to replace fluorescent lamps. Led troffer illumination is high, slim, complete heat dissipation, low power, and less heat.



INDOOR

Focus Round Light-(Surface)



- Fixtures in diameters from 13.8" through 47.2"
- Recessed light source design achieving perfect glare control
- Edge-lit technology and non-yellowing optical PMMA
- Rod and Aircraft Cable Pendant mounted and surface mounted
- Special end caps design for easy run mount



INDOOR

Dome LED Ceiling Fixture
Selectable

3000K

4000K

5000K

CCT SELECTABLE

- CCT selectable (3000K, 4000K, 5000K in one)
- Classic dome shaped lens design
- Triac dimming



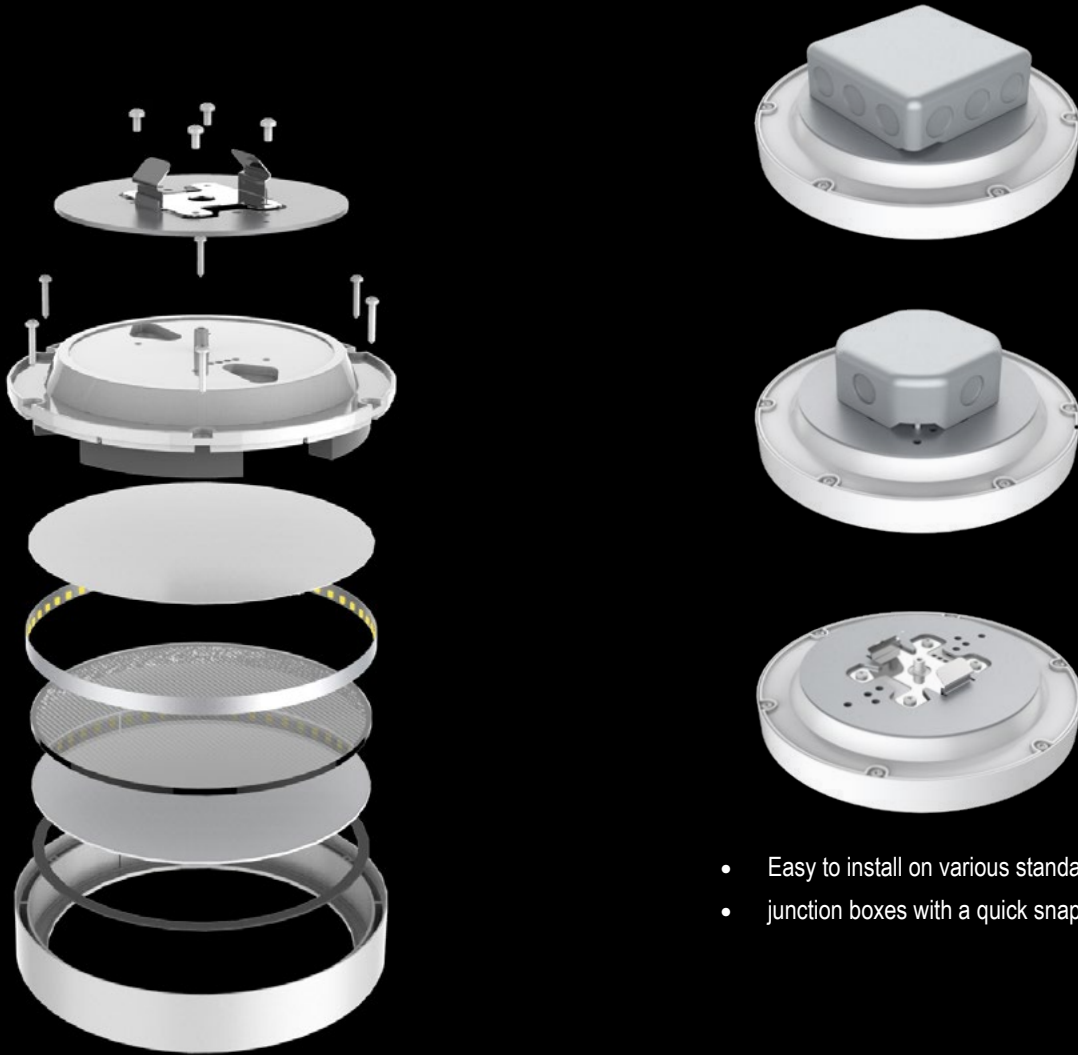
INDOOR

SleekCeiling LED Luminaire

- Edge-lit technology, even illuminations
- Simple and elegant appearance design
- Easy to install on various standard junction boxes with a quick snap
- Triac and 0-10V dimming optional
- Suitable for damp locations
- 90 CRI is standard; 80 CRI is optional



- Simple and elegant appearance design



- Easy to install on various standard junction boxes with a quick snap



• 90 CRI is standard

80 CRI is optional

INDOOR

Type C T8 Quick-kit

Above All's External Drive LED Type C tubes are ideal for customers with older fluorescent ballasts who want to maximize efficiency, but don't want to install Type B linear voltage retrofit lamps. It's compatible with our LED emergency backup solutions and dimming controls. Above All Type C LED tubes offer high system efficacy, guaranteed system compatibility, and the greatest overall performance. Best of all, Type C LED tubes are eligible for unique rebate opportunities.



INDOOR

Commercial Downlight Retrofit Kit 6 inch & 8 inch

The Above All commercial-grade LED Recessed Downlight Retrofit comes standard with a quick connect-case and conduit to make an easy connection to an existing recessed fixture frame junction box, snap in style eliminates the need to use a nut on the inside of the box making the installation time very quick. It is suitable for dry and damp locations.



INDOOR

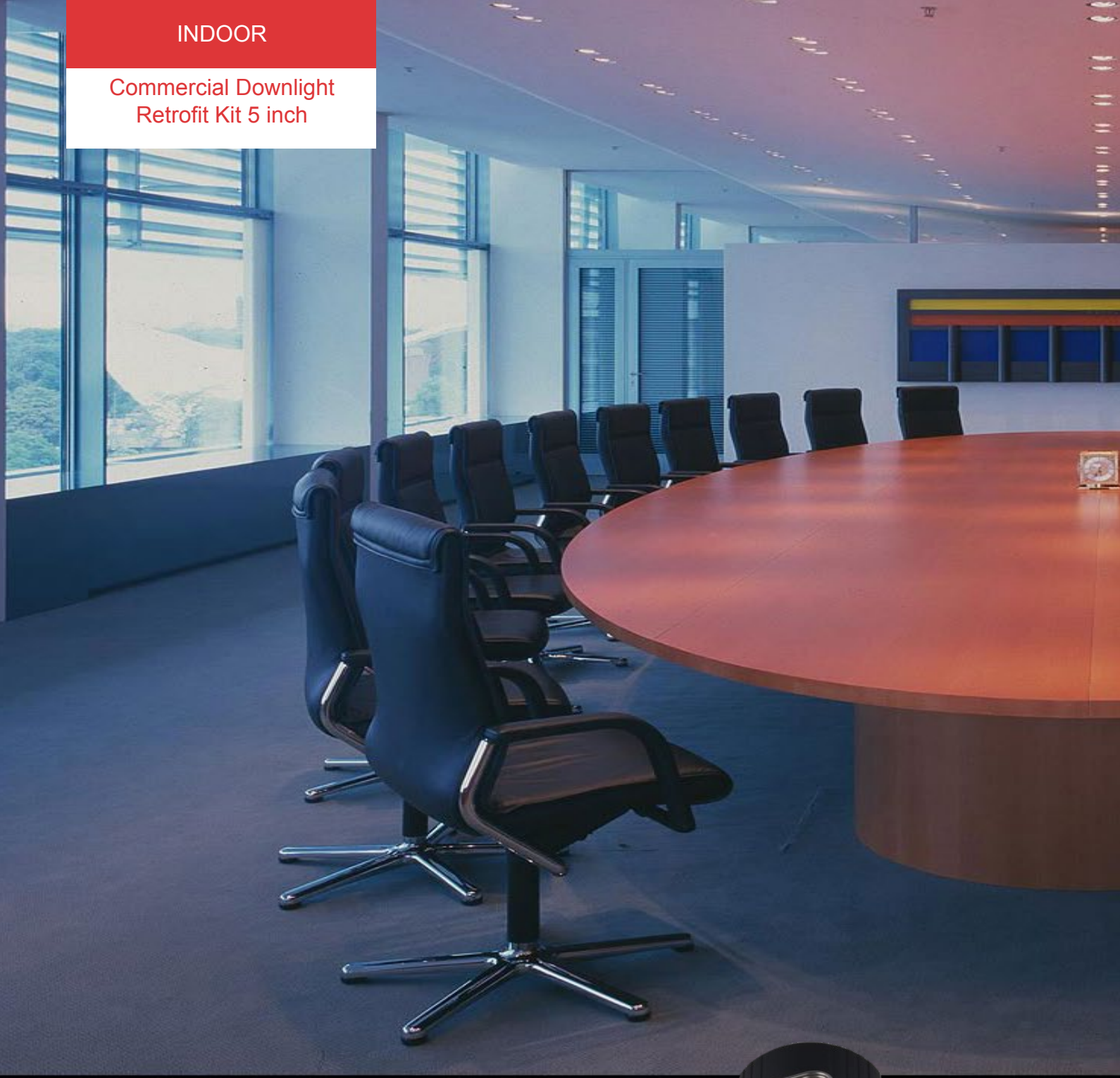
Commercial Downlight
Retrofit Kit 4 inch

LED down light is suitable for dry and damp location. Uniform light, fast response, high CRI, stable quality. Compatible with most residential and commercial dimmers, Triac dimming model. Comfortable diffused light. Retrofit E26 base and connector are available. Easy for installation and convenient to use.



INDOOR

Commercial Downlight
Retrofit Kit 5 inch



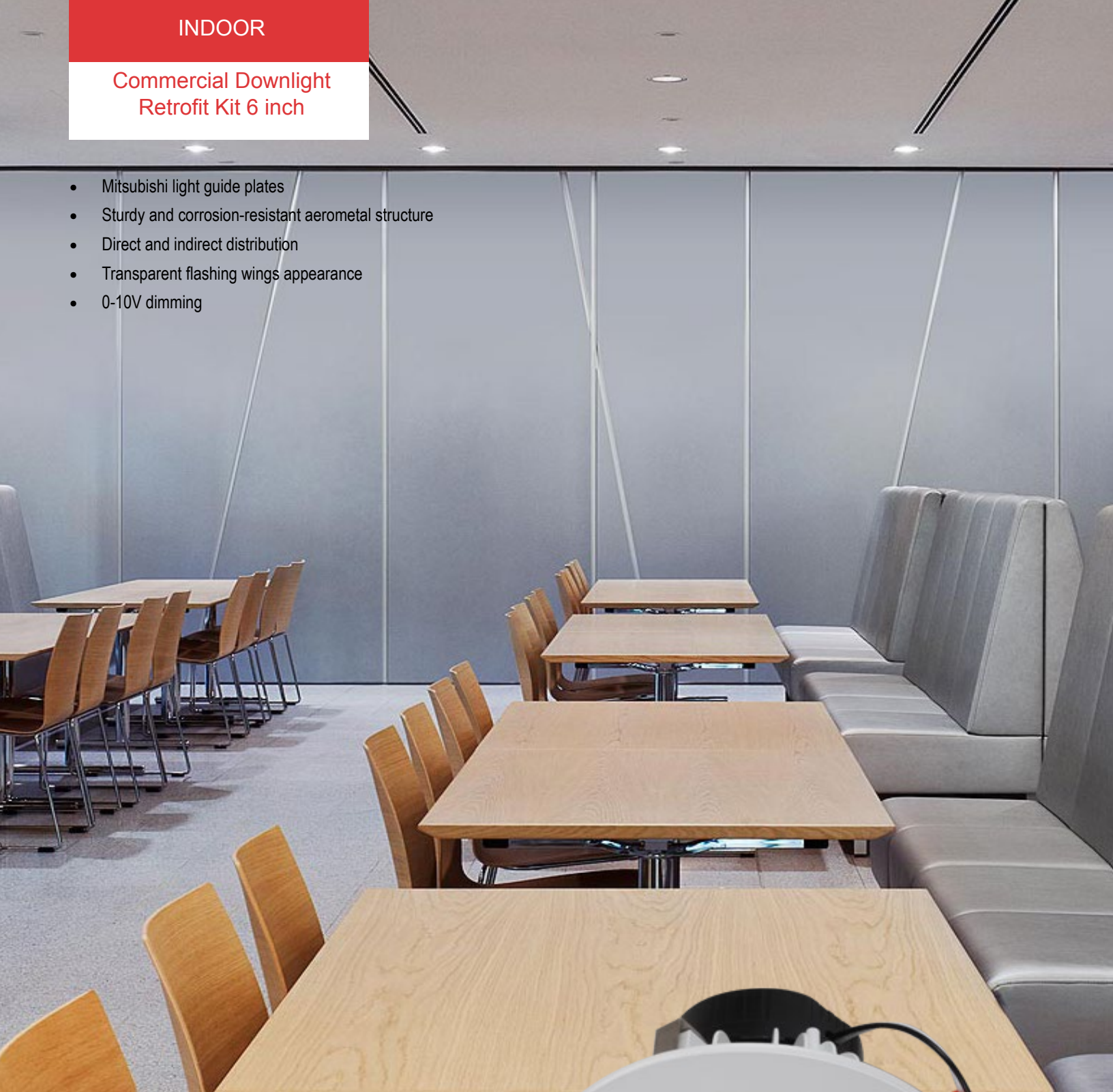
LED down light is suitable for dry and damp location. Uniform light, fast response, high CRI, stable quality. Compatible with most residential and commercial dimmers, Triac dimming model. Comfortable diffused light. Retrofit E26 base and connector are available. Easy for installation and convenient to use.



INDOOR

Commercial Downlight Retrofit Kit 6 inch

- Mitsubishi light guide plates
- Sturdy and corrosion-resistant aerometal structure
- Direct and indirect distribution
- Transparent flashing wings appearance
- 0-10V dimming



LED down light is suitable for dry and damp location. Uniform light, fast response, high CRI, stable quality. Compatible with most residential and commercial dimmers. Comfortable diffused light. Retrofit E26 base and connector are available.



100 Merteck



ABOVE ALL Lighting

1135 Thomas Busch Highway,

Pennsauken, NJ 08110

866-222-8866

info@aboveallighting.com

©2022 ABOVE ALL all rights reserved