



SMT LED AREA LIGHT

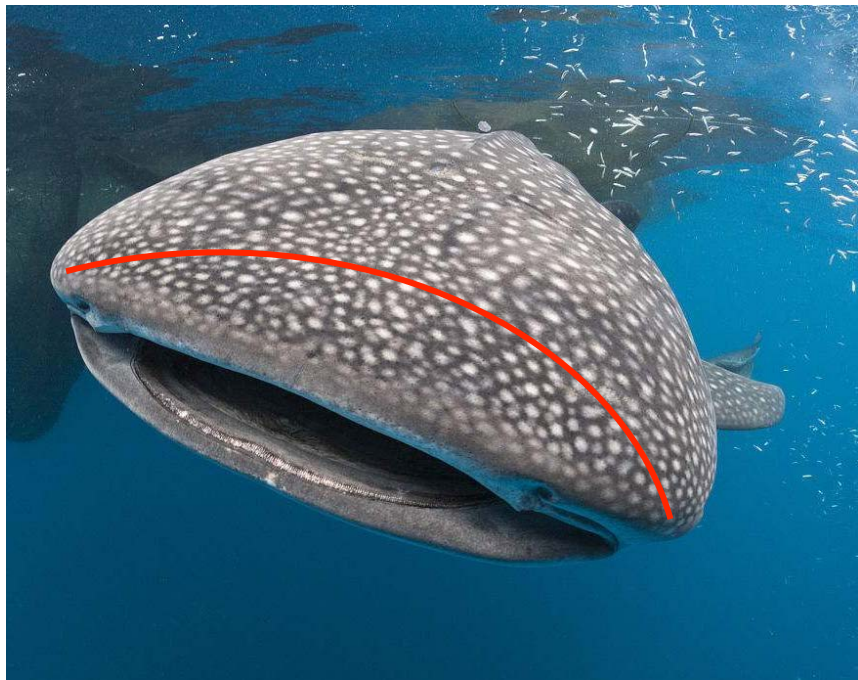
2019



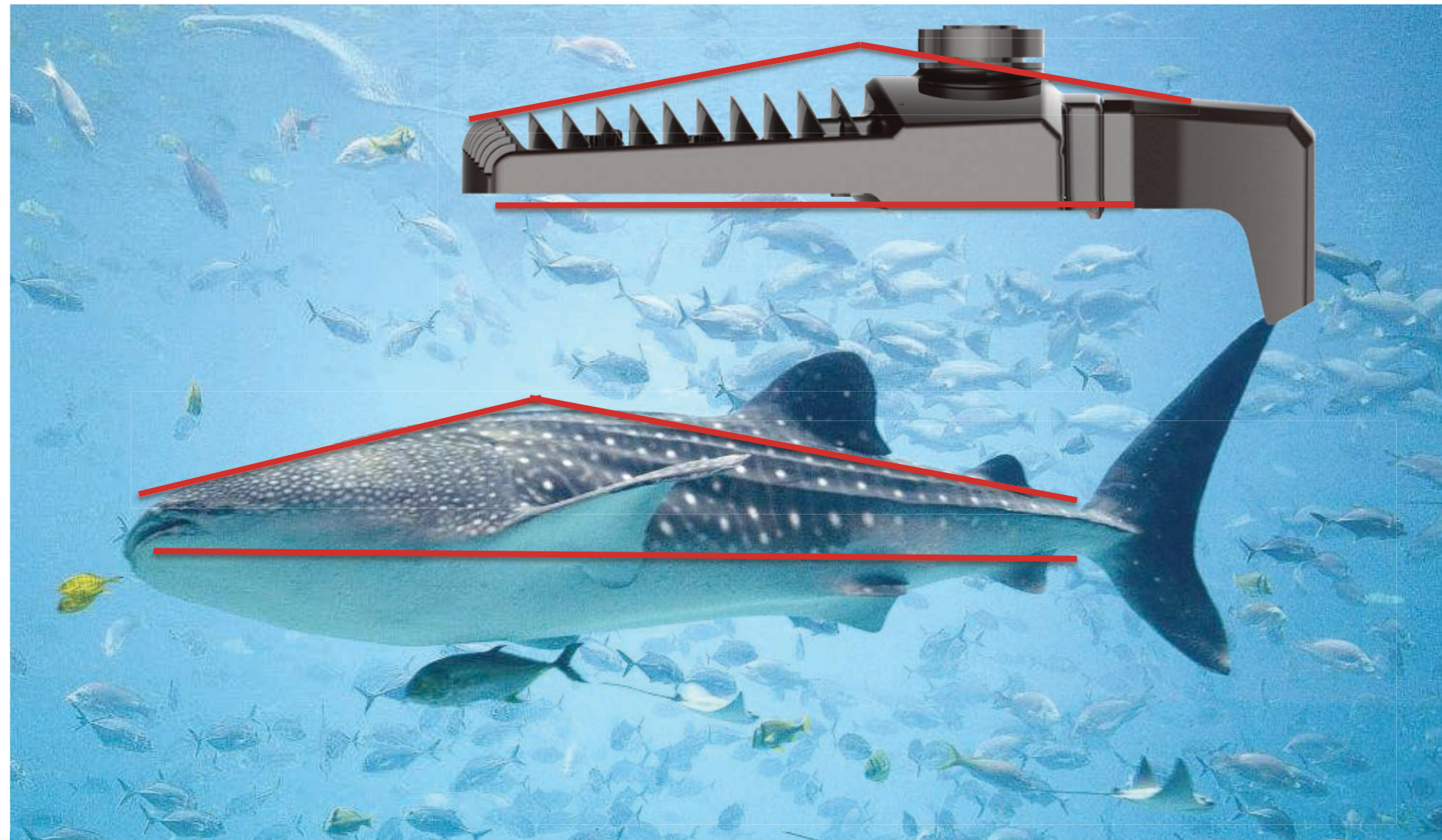
SMT LED AREA LIGHT

DESIGN INSPIRATION

Natural+Streamlined+Compact



SMT LED AREA LIGHT



SMT LED AREA LIGHT

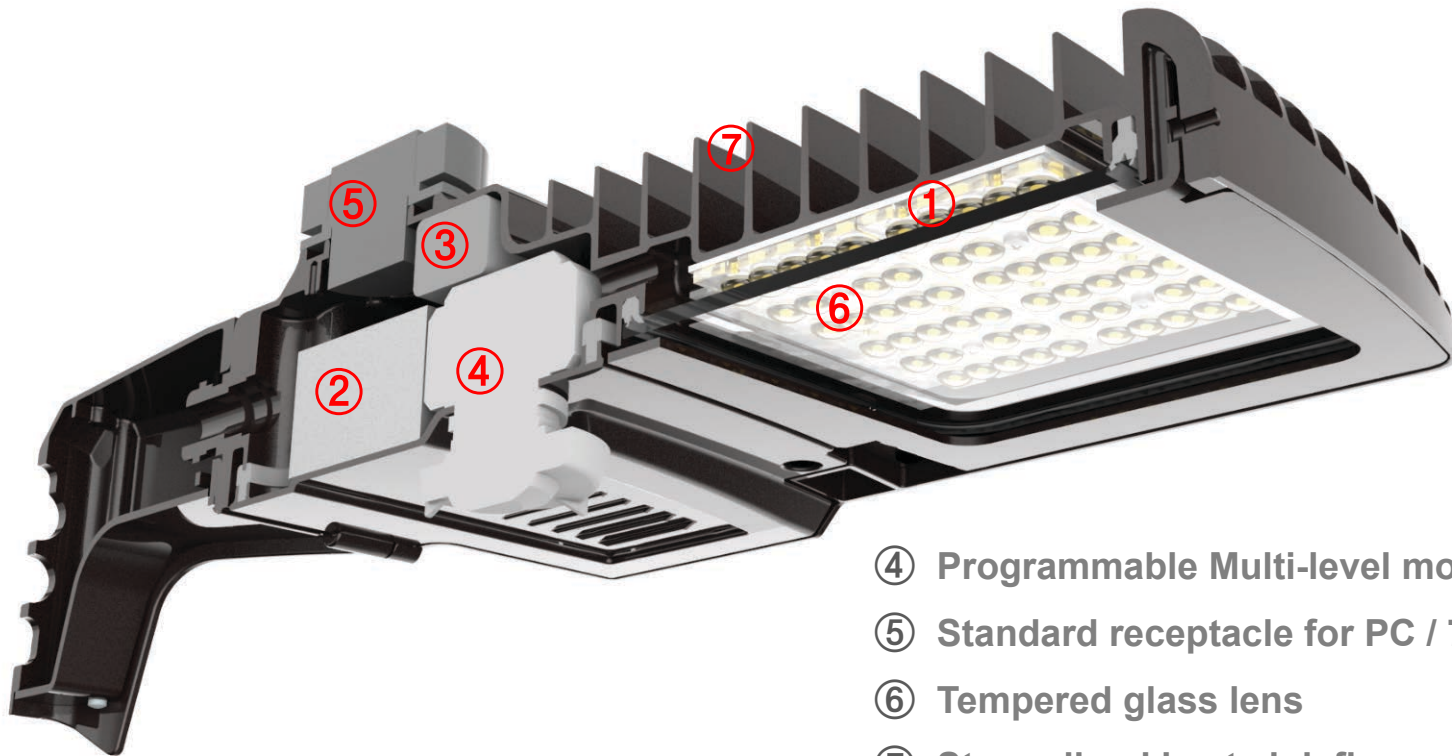
TECHNICAL INFO.

Model NO.	Wattage	Lumens	Voltage	Dimming Features	Optics	EPA	IP Rating	LPW
SMT40	42	5155	120-277V 347/480V	0-10V	Type V	0.53 Sq.Ft.	66	123
SMT60	62	7200	120-277V 347/480V	0-10V	Type V	0.53 Sq. Ft.	66	116
SMT80	75	8862	120-277V 347/480V	0-10V	Type V	0.53 Sq.Ft.	66	118



SMT LED AREA LIGHT

FEATURES



- ① High performance LUMILEDS 3030 2D LED
- ② Philips Advance LED driver
- ③ Integral 10kV surge suppression protection

- ④ Programmable Multi-level motion sensor
- ⑤ Standard receptacle for PC / 7pin receptacle
- ⑥ Tempered glass lens
- ⑦ Streamlined heat sink fins

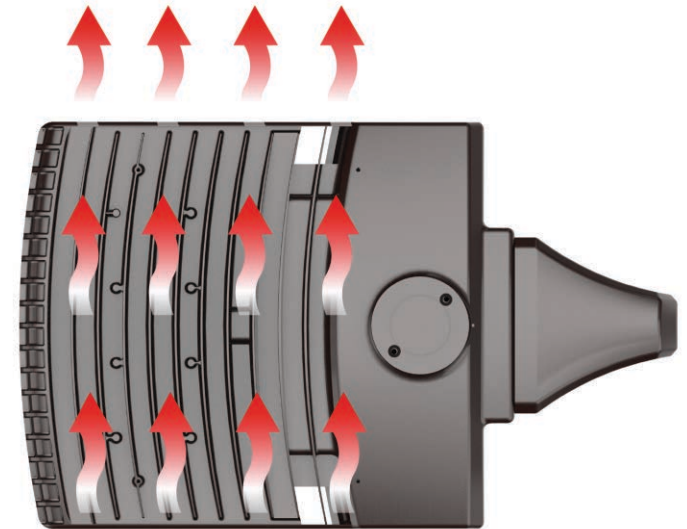
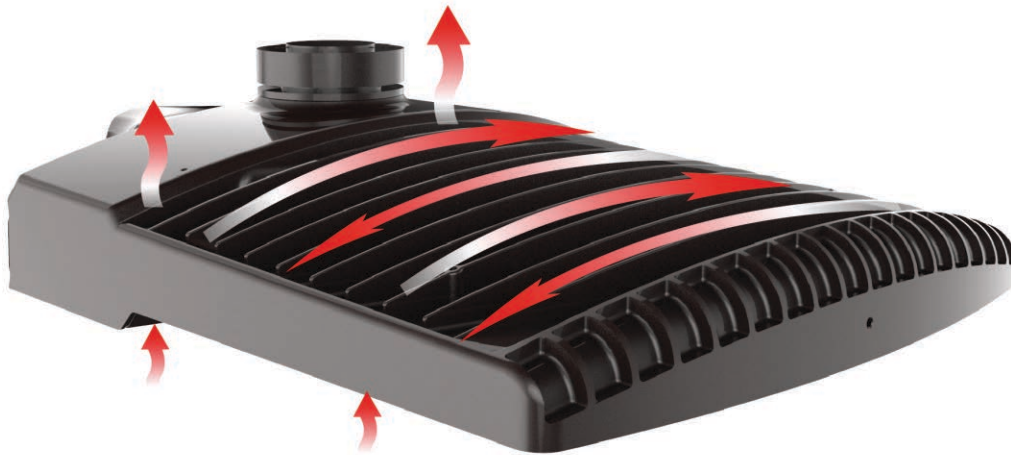
SMT LED AREA LIGHT

THERMAL MANAGEMENT

Streamlined heat sink fins PLUS opening in the middle of body

Constant flow of air that passes through the luminaire

Heat management of the LED module separate from the driver



SMT LED AREA LIGHT

HINGED ACCESS

Swing-down, hinged door secured with screws

It allows for easy installation and hassle-free maintenance and component hardware replacement.



SMT LED AREA LIGHT

MOUNTING OPTIONS



Arm Mount



Trunnion Mount



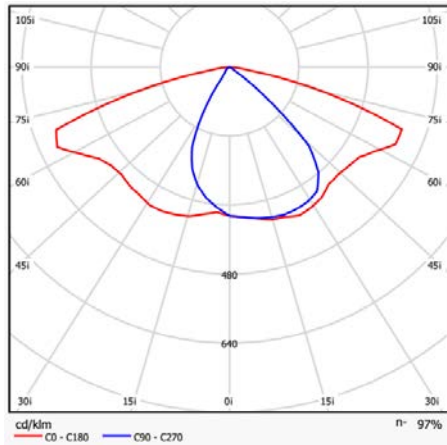
Slipfitter Mount



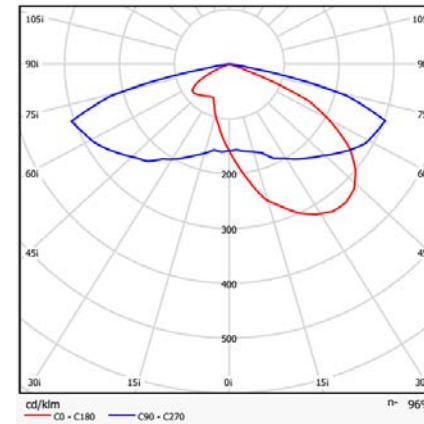
Wall Mount

SMT LED AREA LIGHT

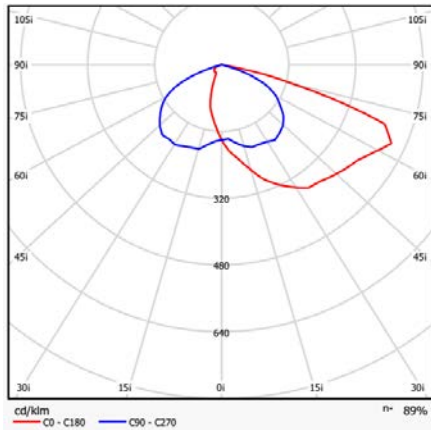
VARIOUS OPTICS



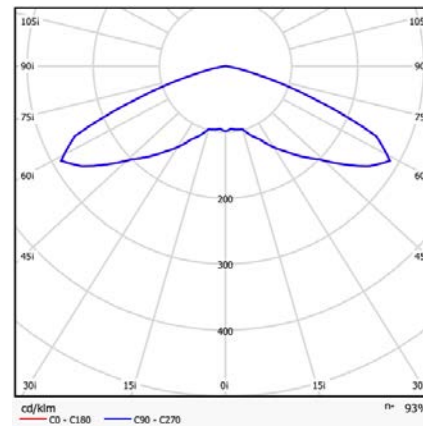
Type II



Type III



Type IV



Type V

SMT LED AREA LIGHT

COMPLIANCE & STANDARD



DLC Premium



ETL Wet Location Listed



Meet`s T24 Requirements



IP 66 Rated

SMT LED AREA LIGHT

APPLICATIONS

- Area Light
- Roadway Light
- Flood Light
- Wallpack Light





Thank you!