

Above All



Sleek and Low Profile Design

Some Low Quality Product



Ordinary Design

Above All



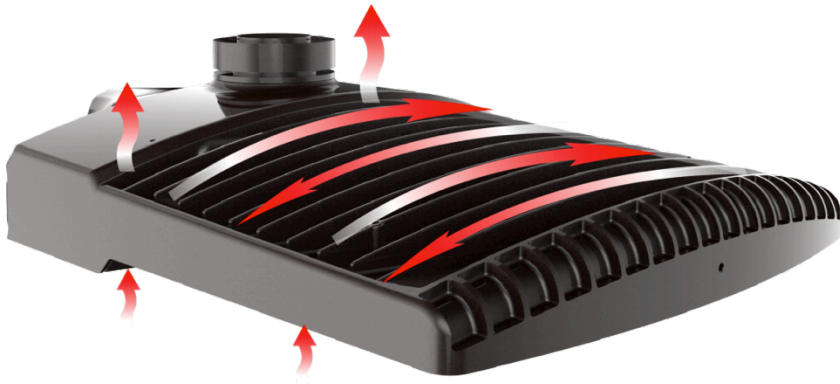
**Low EPA=0.53 Sq.Ft.
Maximum Wind Load**

Some Low Quality Product



Bad to withstand heavy wind

Above All



65,000 hours for 80W SMT in 122°F (50°C)

- **Streamlined heat sink fins PLUS opening in the middle of body**

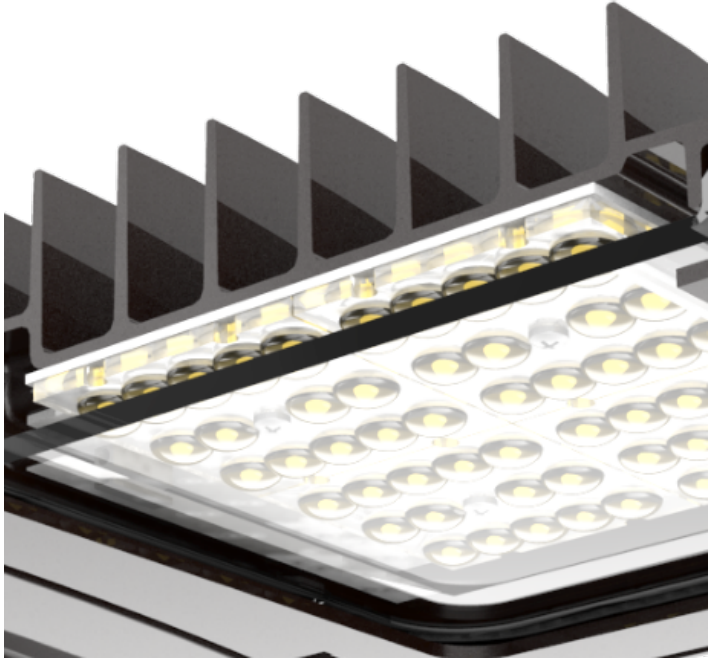
Some Low Quality Product



Bad Heat Management & Shorter Life Span

- **Small and closed heat sink structure**

Above All



**Tempered glass lens
doesn't fade and discolor**

Some Low Quality Product



**Polycarbonate lens
easy to turn yellow and crack**

Above All

Some Low Quality Product



**Swing-down & Hinged door
for easy installation and hassle-free
maintenance**



**All with screws
inconvenient for maintenance**